

openFT

Enterprise File Transfer

Introduction

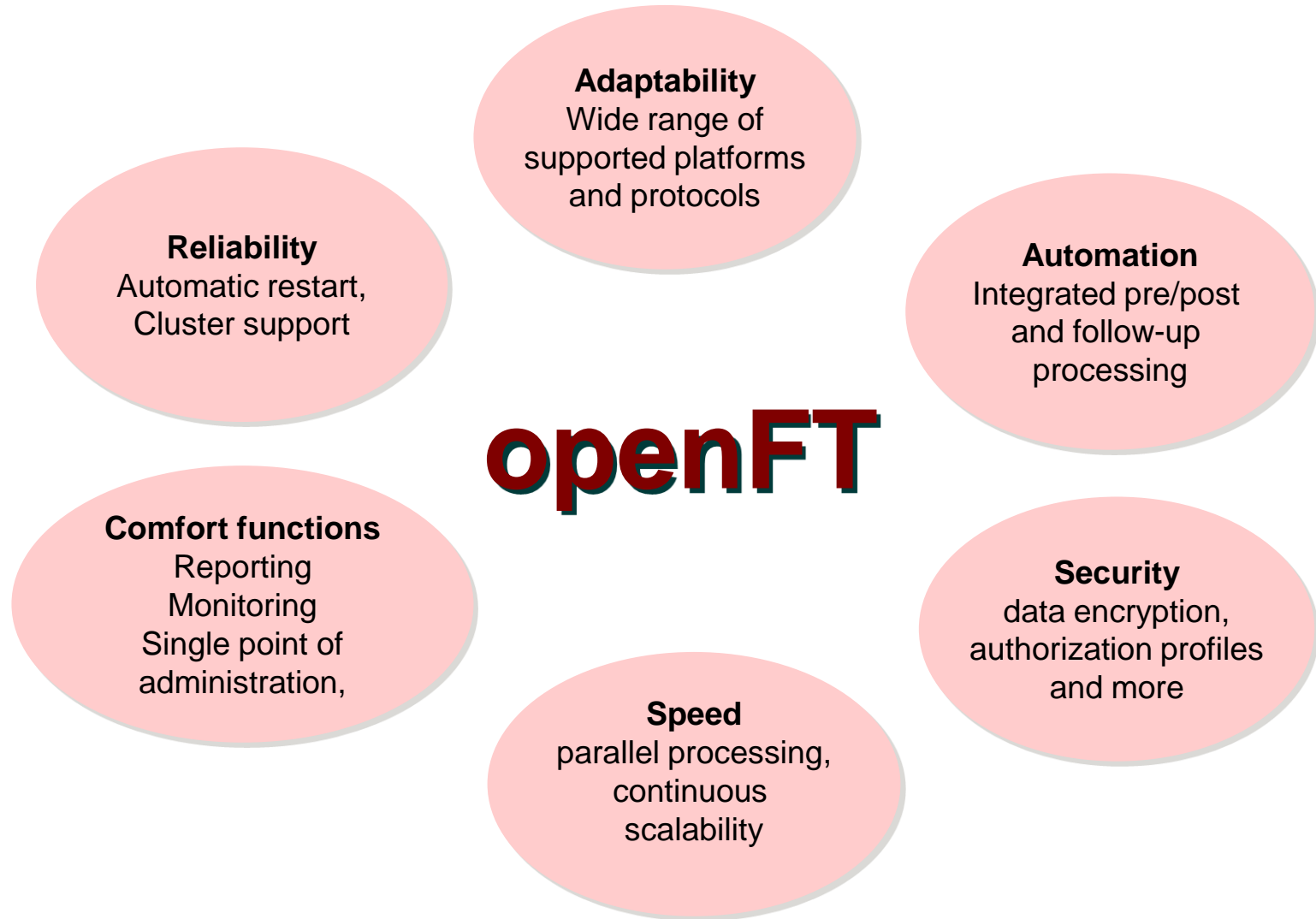
openFT

Ready to Transfer your
Business Critical Data



openFT

- is a high-performance solution for enterprise-wide file transfer within heterogeneous IT landscapes
- transfers files fully automated
- processes large business-critical data loads with absolute reliability and security
- provides automated pre-, post and follow-up-processing
- offers comprehensive remote control facilities and security governance
- proves its outstanding quality, even under extreme loads, in over 100.000 server installations



Managed FileTransfer

- One of the compelling characteristics of a Managed File Transfer (MFT) suite is its ability to maintain performance, and provide management and security to files of any size. This is almost always facilitated by the streaming input/output (I/O) component of an MFT.

Source: L. Frank Kennedy, Gartner, 2008

- Numerous factors cause companies to re-examine how they manage the movement of information from system to system, partner to partner and person to person. FTP alone is not a viable option to give you the insight, security, performance and, ultimately, the risk mitigation necessary to *responsibly conduct business. Fortunately, there is a set of vendors that offers the technologies, services and disciplines to help you manage all aspects of the transfer of information.*

Source: L. Frank Kennedy, James Lennard, Gartner, 2008

- **Visibility** is a key first step to identifying the processes, systems and people affecting and being affected by messages, files and transactions.
- **Monitoring** enables companies to proactively and reactively track messages, files and transactions as they flow through systems and among people.
- **Security** provides the ability to address risk, identity, access and authentication issues.
- **Reporting and Auditing** enable companies to compile and assemble data related to all aspects of messages, files and transactions specific to users' needs.
- **Adaptability** provides companies with the opportunity to connect with systems and infrastructures.
- **Provisioning** enables enterprises to rapidly onboard systems, companies and individuals, and to continually manage all aspects of change.
- **Workflow and Automation** enable companies to design, test and execute the processes associated with file transfer.

Source: Gartner Research Note, 2009

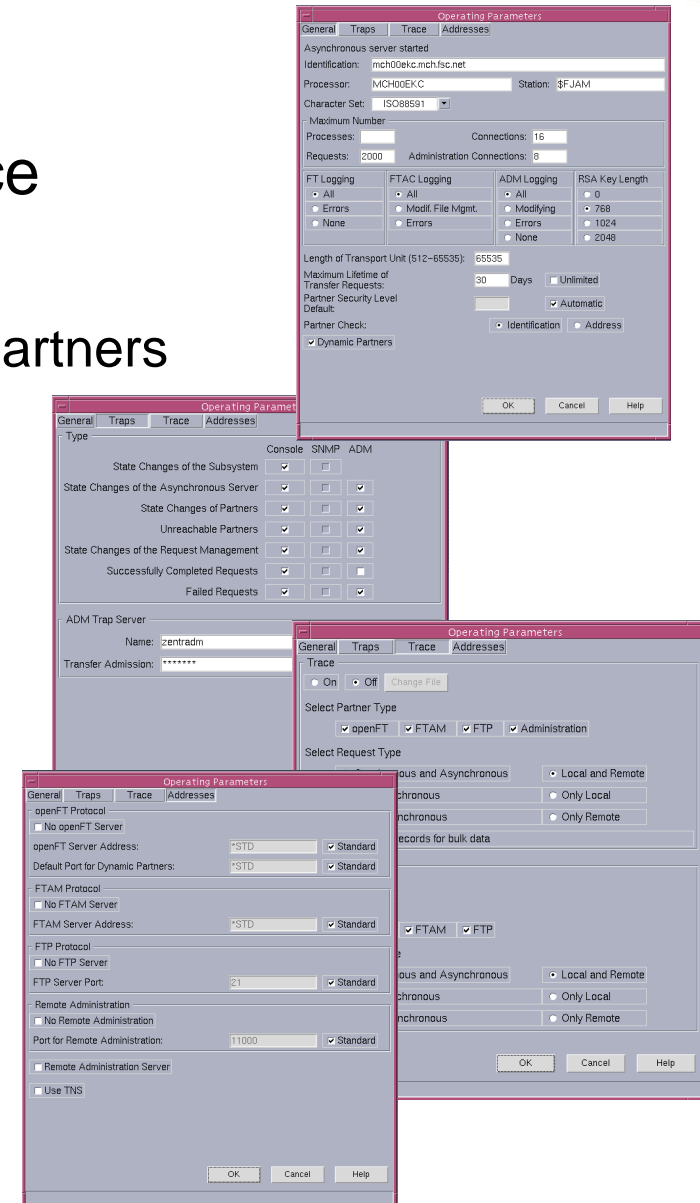


openFT fulfills all requirements of a Managed File Transfer

Functionality

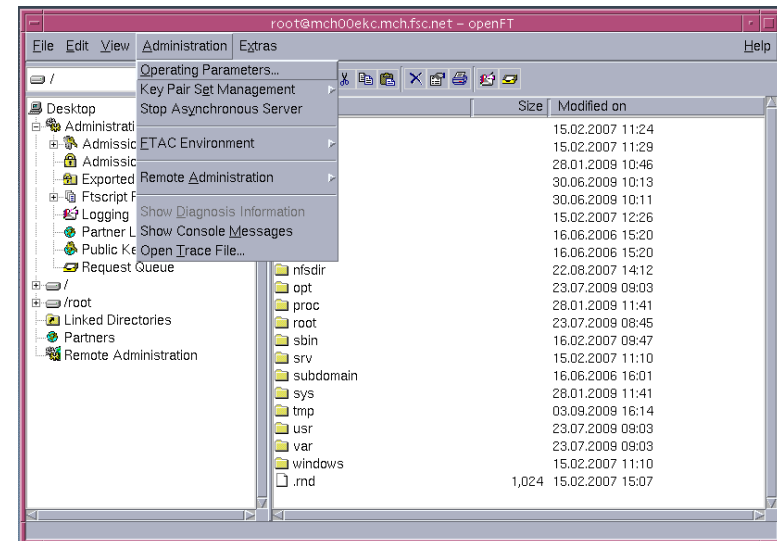
Visibility and Monitoring (1)

- Easy installation
- Enterprise-wide administration interface
 - Easy-to-use graphical interface
 - Central administration of local and remote partners
 - Monitoring functions
 - Logging of all file transfer requests
 - Administration-free encryption
 - Request management
 - Scheduling
 - Define specific time to start or stop transfer
 - Status tracking
 - Priority control
 - change the order of requests for processing



Visibility and Monitoring (2)

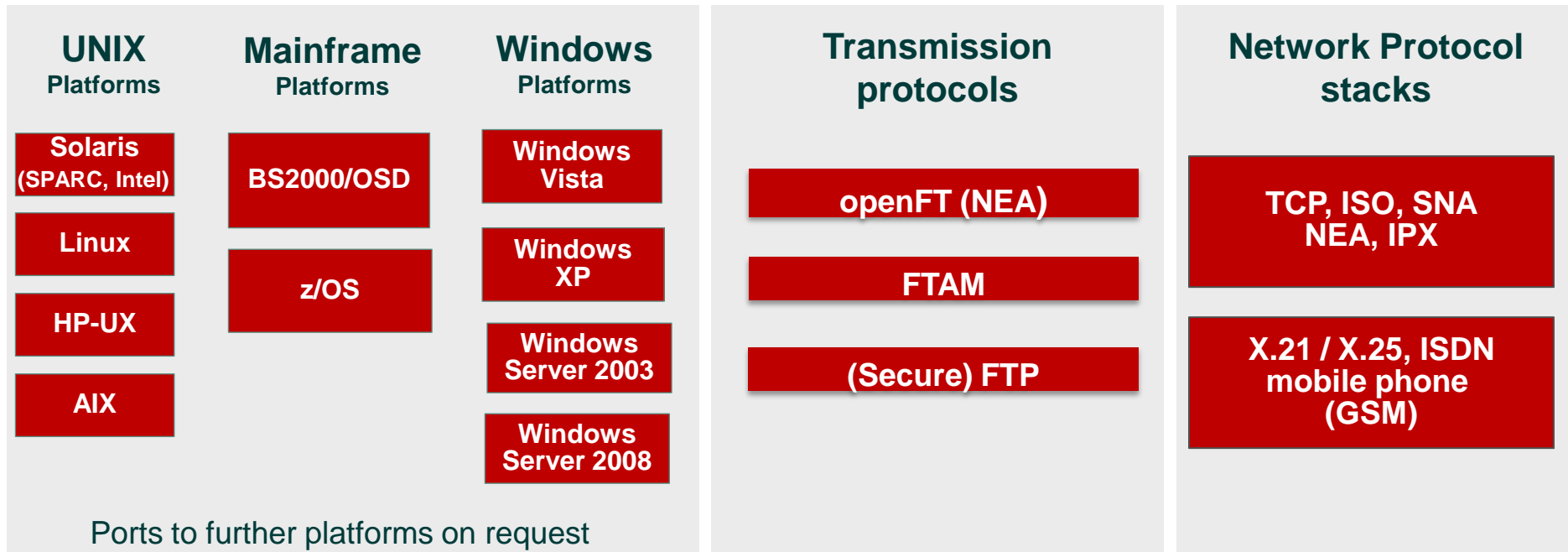
- openFT provides a local and remote file management option
 - Renaming or deleting files, querying or changing file attributes
 - Creating, displaying, renaming or deleting directories
- Benefits:
 - Check and prepare the partner system prior to file transfer
 - Manage local and remote file systems via an easy-to-use interface
- Command-Line Interface
 - Use all openFT functions as commands



- **File Transfer Access Control (openFT-AC):**
 - Protection against unauthorized access
 - Profiles defining access rights for partner systems
 - Independence of openFT access authorization and login authorization
 - User-specific access rights
 - Flexible grading of access rights
 - Additional benefit: prevention of system attacks
- **Seamless integration into existing security infrastructures (e.g. SECOS, RACF)**
- **Encryption of transfer request and transfer data**
- **Authentication of partner instances**
- **Audit compliant logging of all transfer request**
- **Ensuring data integrity by content checks (hash sums)**

- **Guaranteed delivery of data**
 - Automatic resume of data transfer in case of interruption
 - Queuing of transfer requests until required resources are available
- **Dynamic change of configuration**
 - Immediate effect
 - Undisturbed processing of active requests
- **Increased availability**
 - Virtualization: run several openFT instances concurrently on a single system, each using its own resources
 - Failover-cluster: takeover of openFT requests in case of system failure or resource bottleneck by another instance
- **Audit compliant logging**

- Don't care about platforms, protocols and file formats
 - System platforms
 - Communication in a heterogeneous server environment
 - Protocols and networks
 - Communication through different networks and using different protocols
 - Data formats
 - Process and transfer of files of any format

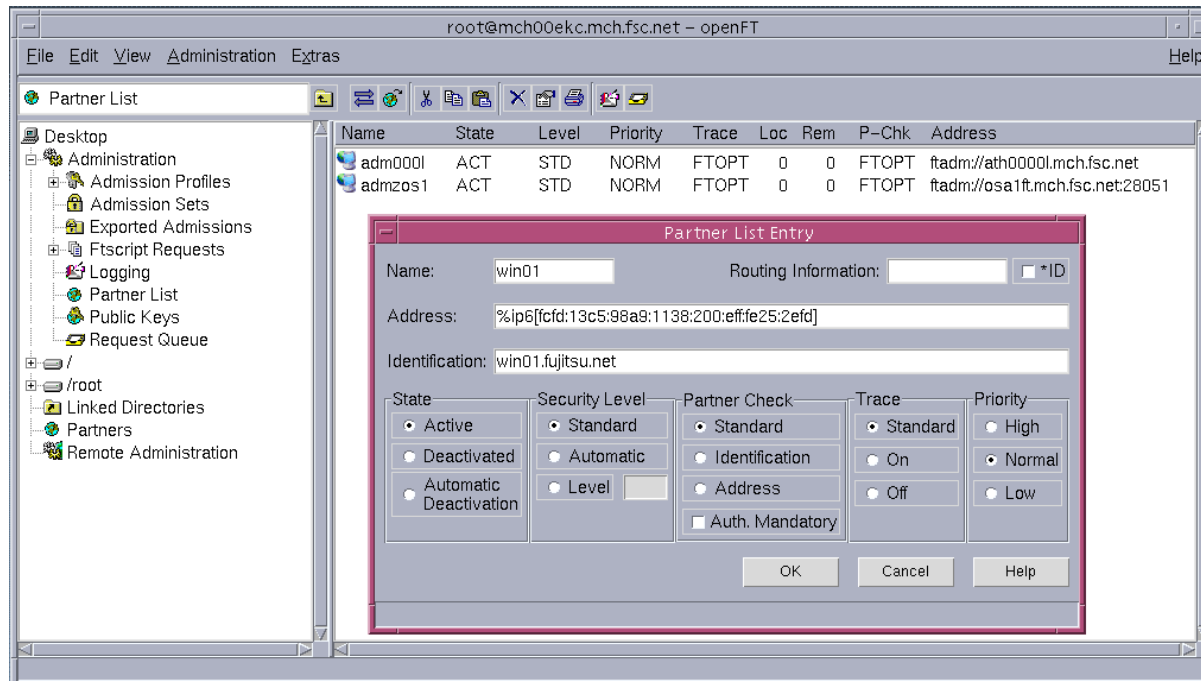


■ Dynamic partner list

■ Administration via GUI

- Add / delete communication partners
- Manage partner access and properties
- Mapping with FTAC security levels

■ Immediate effect of changes



■ Pre-processing:

- Direct transfer of dynamically created data without intermediate files
- Monitored as part of file transfer request
- Example: direct transfer of invoice out of logistic order process

■ Post-processing:

- Direct use of transferred data in programs or scripts
- Monitored as part of file transfer request
- Example: direct use of transferred order data in delivery tool.

■ Follow-up processing:

- Start of programs or scripts after completion of transfer request
- Not part of file transfer request
- Example: printing out transferred files, automatic updating of databases

■ Scripting:

- Programming of pre-, post- and follow-up processing
- Usage of API and the resulting exit codes

■ Remote command execution:

- Execution of operating system commands on remote systems
- Completely under control of built-in security
- Benefits:
 - Simple integration of commands executed in remote systems in local command procedures
 - Check of readiness of remote system for transfer request

■ API:

- Complete openFT functionality available for use in applications

■ Ftscript:

- XML-defined control of workflow

- openFT is scalable from desktop to high-end server and makes optimal use of available resources
- Resource control:
 - allows operating parameters to be set for a specific installation
 - Maximum number of active parallel transport connections
 - Maximum number of processes used for the execution of requests
- Data compression:
 - permits the transfer of files in compressed form
 - Benefits:
 - reduce the load on transmission paths
 - shorten transfer times and save costs

Customer Projects

- openFT as Central Data Hub
 - Processing of up to 100 000 import/export orders per hour
 - Secure B2B communication via FTAC profiles
 - Standardized transport thanks to FTAM support of openFT
- Customer benefit
 - Workflow fully automated and simplified
 - Performance optimized through virtualized openFT servers
 - Simple administration of growing number of users
 - Optimized exchange by data consistency checks
 - Customs declaration available in timed

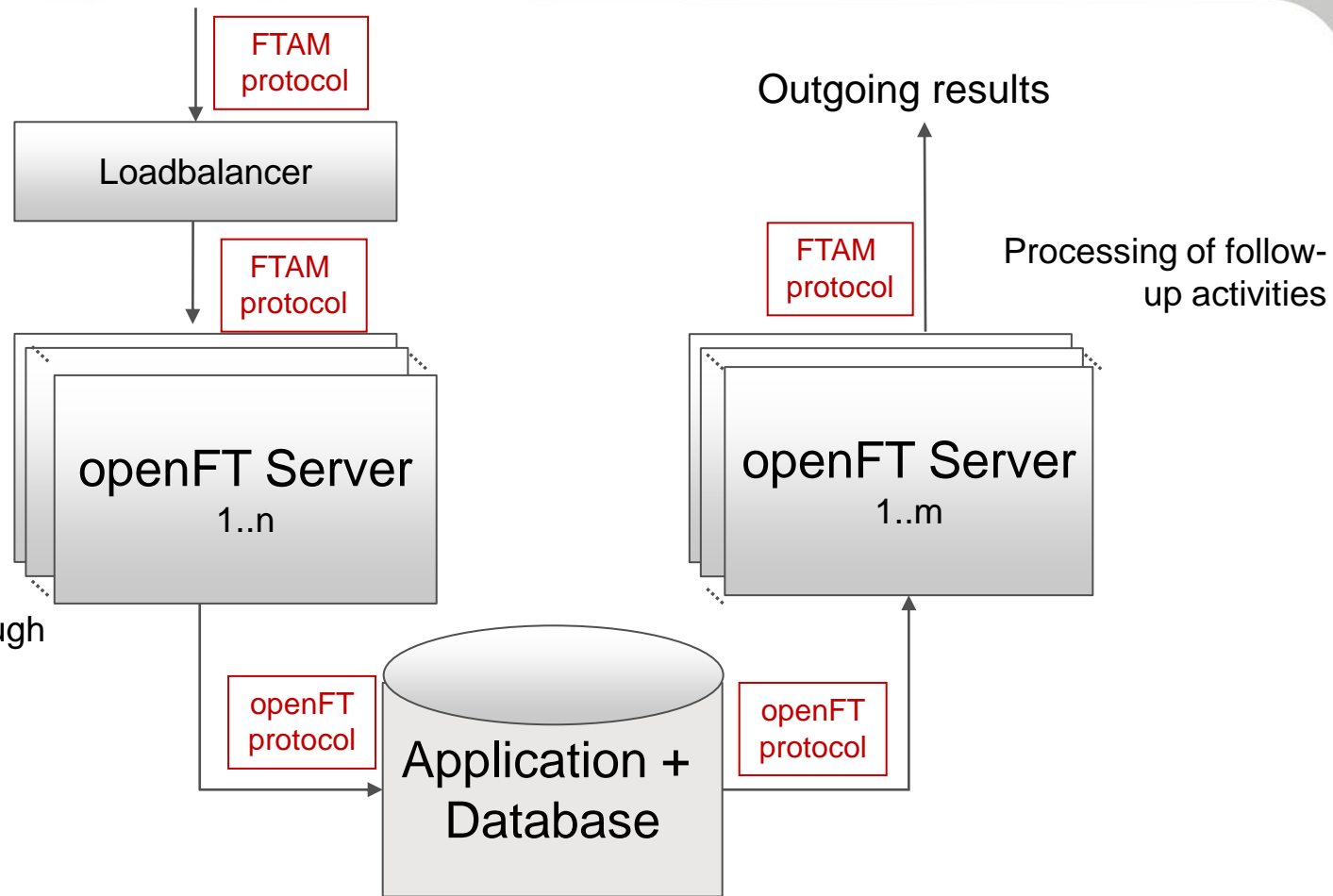


Workflow

Incoming requests
(~100.000 per hour)

Routing to virtual
openFT servers

- FTAC profiles,
- Partner administration,
- Collection of requests,
- Request optimization through packaging



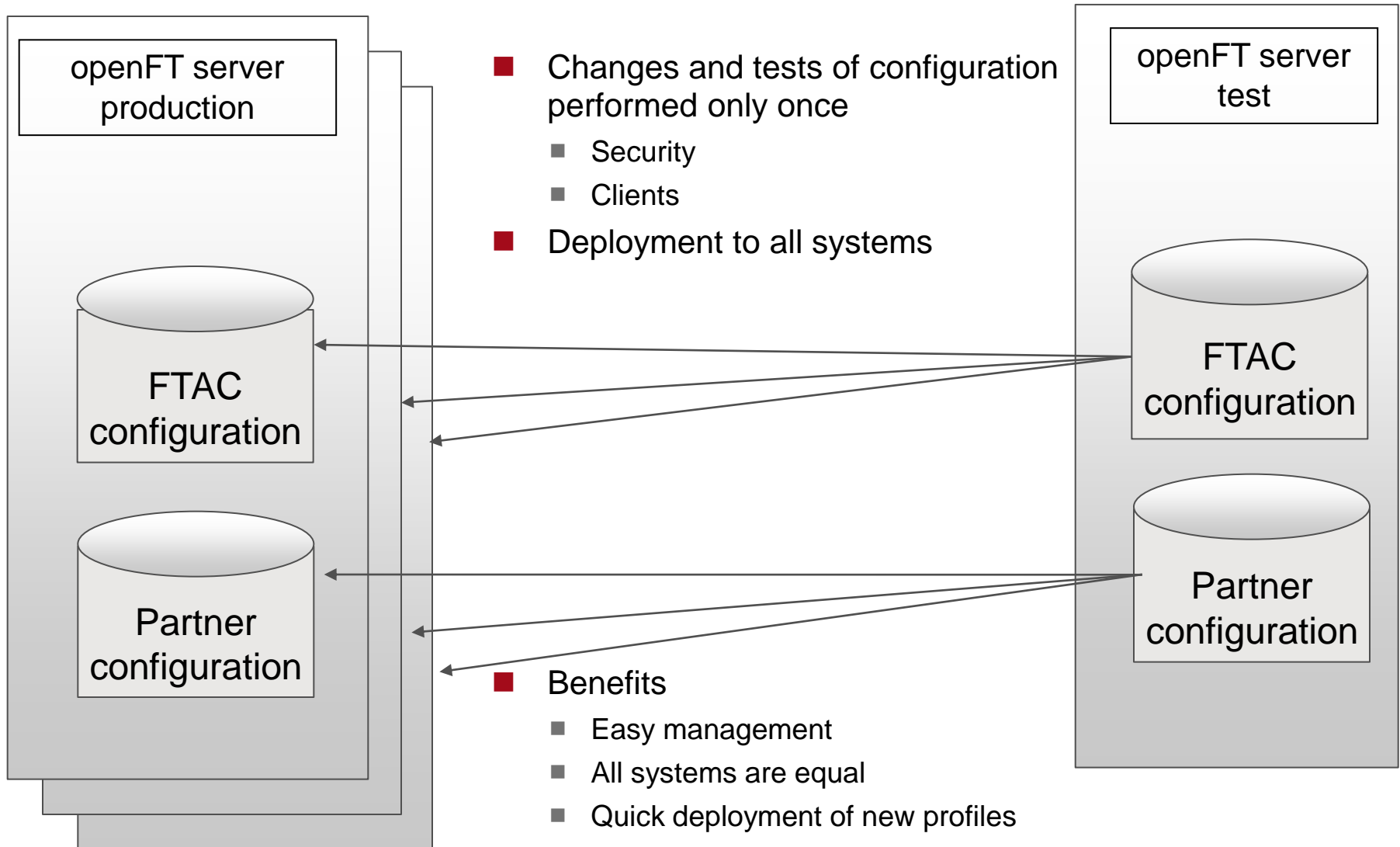
Check of data:

- All customs relevant data available ?

Start of follow-up activities:

- Request confirmation,
- Ask for additional data

Identical openFT configuration




Summary

■ openFT is ...

- a Managed File Transfer fully compliant with the Gartner definition
- an enterprise wide file transfer solution and beyond
 - easy to install
 - easy to be managed
- available on all major platforms
- designed for heterogeneous networks
- a proven solution with over 100.000 server installations world-wide

■ openFT offers ...

- fully automated data transfer including pre-, post- and follow-up processing
- secure access and transfer via profiles
- guaranteed delivery
- interaction within the enterprise and with partners



FUJITSU

shaping tomorrow with you