

# Datasheet

## Workplace Manager

### Security Solution for Administrators

Today companies' information security begins with controlling access to PCs. This implies:

- Protecting confidential data and programs
- by accurately verifying and authenticating PC users,
- and effectively preventing unauthorized use.

The Fujitsu security solution - Workplace Manager - enables IT administrators of small and mid-size Windows domains (up to 1000 devices) to manage the security settings centrally and remotely within their network.

Workplace Manager includes the following features:

- Central configuration of the
  - Default authentication methods, e.g. PalmSecure, SmartCard, etc.
  - Password Safe and Encrypted Container
  - Auto BIOS Update (additional license for Workplace Embedded Tools required)
  - Easy PC Protection (additional license for Workplace Embedded Tools required)
- Simple deployment of BIOS and hard disk drive passwords
- Easy remote configuration of BIOS settings

The latest version of Workplace Manager can be downloaded from:

<http://www.fujitsu.com/fts/solutions/high-tech/solutions/workplace/security/secure/index.html>

Product version	Order number
Workplace Manager – Client License	S26361-F2727-L770

A license paper contains one license number with the ordered number of licenses.

We have included three free licenses in the product for test purposes.

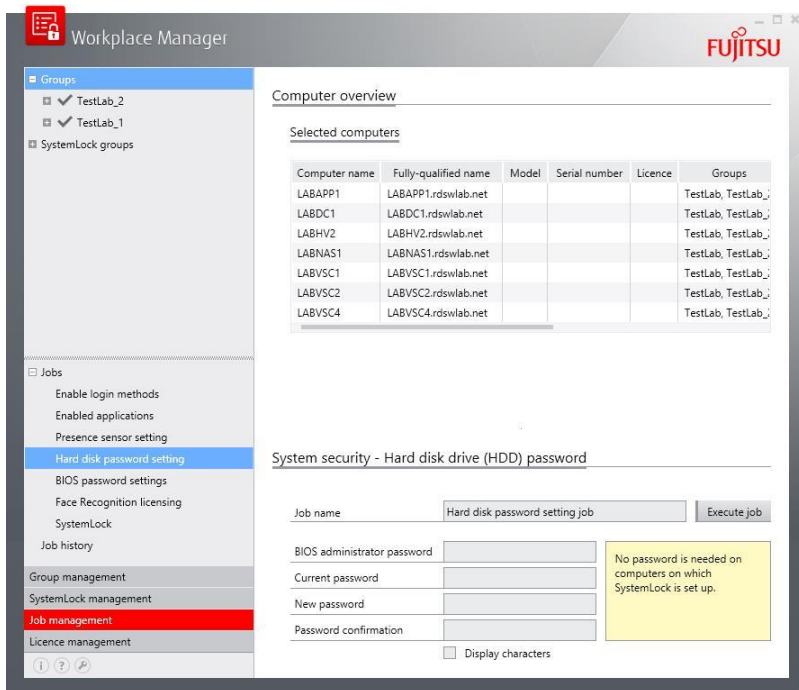
## Features

- Central configuration of authentication methods
  - PalmSecure
  - SmartCard
  - Fingerprint
  - Face Recognition (additional license needed for advanced functionality)
  - Password
- Administration of Fujitsu’s SmartCards
- Configuration of Presence Sensor (FUJITSU Desktop ESPRIMO X913 and X923)

- Configuration of the included security applications
  - Password Safe
  - Encrypted Container
- Configuration of the Workplace Embedded Tools
  - Auto BIOS Update
  - Easy PC Protection
- Remote configuration of BIOS settings

## Usability

- Intuitive graphical user interface
- Import of devices and users from Active Directory
- Computer group management
- Easy deployment of jobs
- Reports about job results
- Job queue for unreachable/ unpowered clients (Standby/ Hibernate/ Off)
- Database to store all relevant information



## Requirements

### Server Components

- Windows Server® 2012 Standard, 64 Bit
- Windows Server® 2012 R2 Standard, 64 Bit
- .NET Framework 4.5
- Microsoft® SQL Server® 2012 Service Pack 1 (SP1) Express
- Internet access to activate licenses
- Optional
  - SmartCard reader (PC/SC compliant)
  - Fujitsu CardOS V4.4 SmartCard

### Client Computing Devices

- Workplace Protect in managed mode
  - Windows 7 SP1 32 / 64 Bit
  - Windows 8.1 32 / 64 Bit
  - Windows 10 64 Bit
- Internet access to activate Face Recognition licenses
- Biometric devices (optional)
  - PalmSecure
  - Fingerprint Sensor
  - WebCam
- SmartCard reader (optional)

# More information

## Fujitsu OPTIMIZATION Services

In addition to Fujitsu Workplace Protect, Fujitsu provides a range of platform solutions. They combine reliable Fujitsu products with the best in services, know-how and worldwide partnerships.

### Dynamic Infrastructures

With the Fujitsu Dynamic Infrastructures approach, Fujitsu offers a full portfolio of IT products, solutions and services, ranging from clients to datacenter solutions, Managed Infrastructure and Infrastructure as a Service. How much you benefit from Fujitsu technologies and services depends on the level of cooperation you choose. This takes IT flexibility and efficiency to the next level.

### Computing products

[www.fujitsu.com/global/services/computing/](http://www.fujitsu.com/global/services/computing/)

- PRIMERGY: Industrial standard server
- SPARC Enterprise: UNIX server
- PRIMEQUEST: Mission-critical IA server
- ETERNUS: Storage system
- BS2000 mainframes

### Software

[www.fujitsu.com/software/](http://www.fujitsu.com/software/)

- Interstage: Application infrastructure software
- Systemwalker: System management software

## More information

Learn more about Fujitsu Workplace Protect, please contact your Fujitsu sales representative, Fujitsu business partner, or visit our website:  
[www.fujitsu.com/fts](http://www.fujitsu.com/fts)

## Fujitsu green policy innovation

Fujitsu Green Policy Innovation is our worldwide project for reducing burdens on the environment. Using our global know-how, we aim to resolve issues of environmental energy efficiency through IT. Please find further information at:  
[www.fujitsu.com/global/about/environment/](http://www.fujitsu.com/global/about/environment/)



## Copyright

© Copyright 2014 Fujitsu Technology Solutions GmbH  
Fujitsu, the Fujitsu logo, are trademarks or registered trademarks of Fujitsu Limited in Japan and other countries. Other company, product and service names may be trademarks or registered trademarks of their respective owners.

## Disclaimer

Technical data subject to modification and delivery subject to availability. Any liability that the data and illustrations are complete, actual or correct is excluded. Designations may be trademarks and/or copyrights of the respective manufacturer, the use of which by third parties for their own purposes may infringe the rights of such owner.

## Contact

FUJITSU  
E-mail: [CCD.info@ts.fujitsu.com](mailto:CCD.info@ts.fujitsu.com)  
Website: [www.fujitsu.com/fts](http://www.fujitsu.com/fts)  
2016-05-17 EM-EN