

# PRIMERGY TX1320 M1

## *System configurator and order-information guide*

June 2016

### Contents

Instructions

Configuration diagram

Configurator

Software Configurator EM64T

I Basic unit

II Processor

III Memory

IV Graphics

V Accessible drives

VI Hard disk drives

VII SAS-Controller

VIII Disk array

IX Communication/Network

X Energy Star restrictions

XI System management options

XII Miscellaneous

XIII Country specific power cords

Change report



### PRIMERGY Server

# Instructions

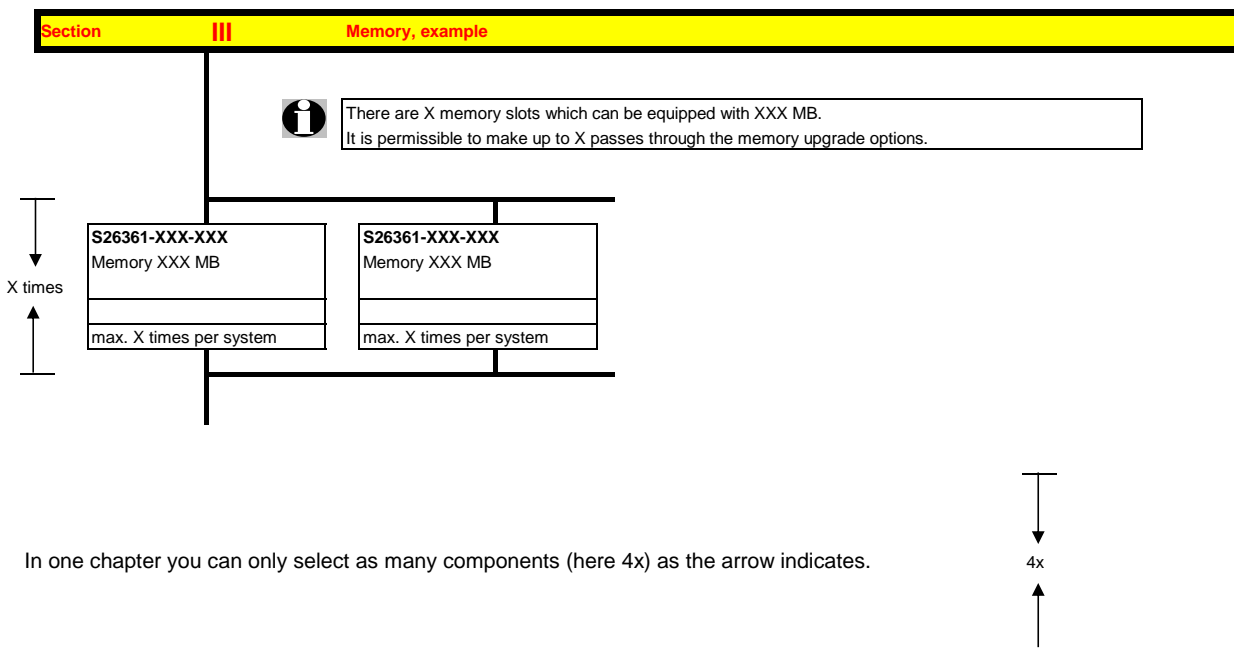
This document contains basic product and configuration information that will enable you to configure your system via PC-/ System-Architect.

Only these tools will ensure a fast and proper configuration of your PRIMERGY server or your complete PRIMERGY Rack system.

You can configure your individual PRIMERGY server in order to adjust your specific requirements.

The System configurator is divided into several chapters that are identical to the current price list and PC-/ System-Architect

Please follow the lines. If there is a junction, you can choose which way or component you would like to take. Go through the configurator by following the lines from the top to the bottom.



In one chapter you can only select as many components (here 4x) as the arrow indicates.

Please note that there are information symbols which indicate necessary information.



**For further information see:**

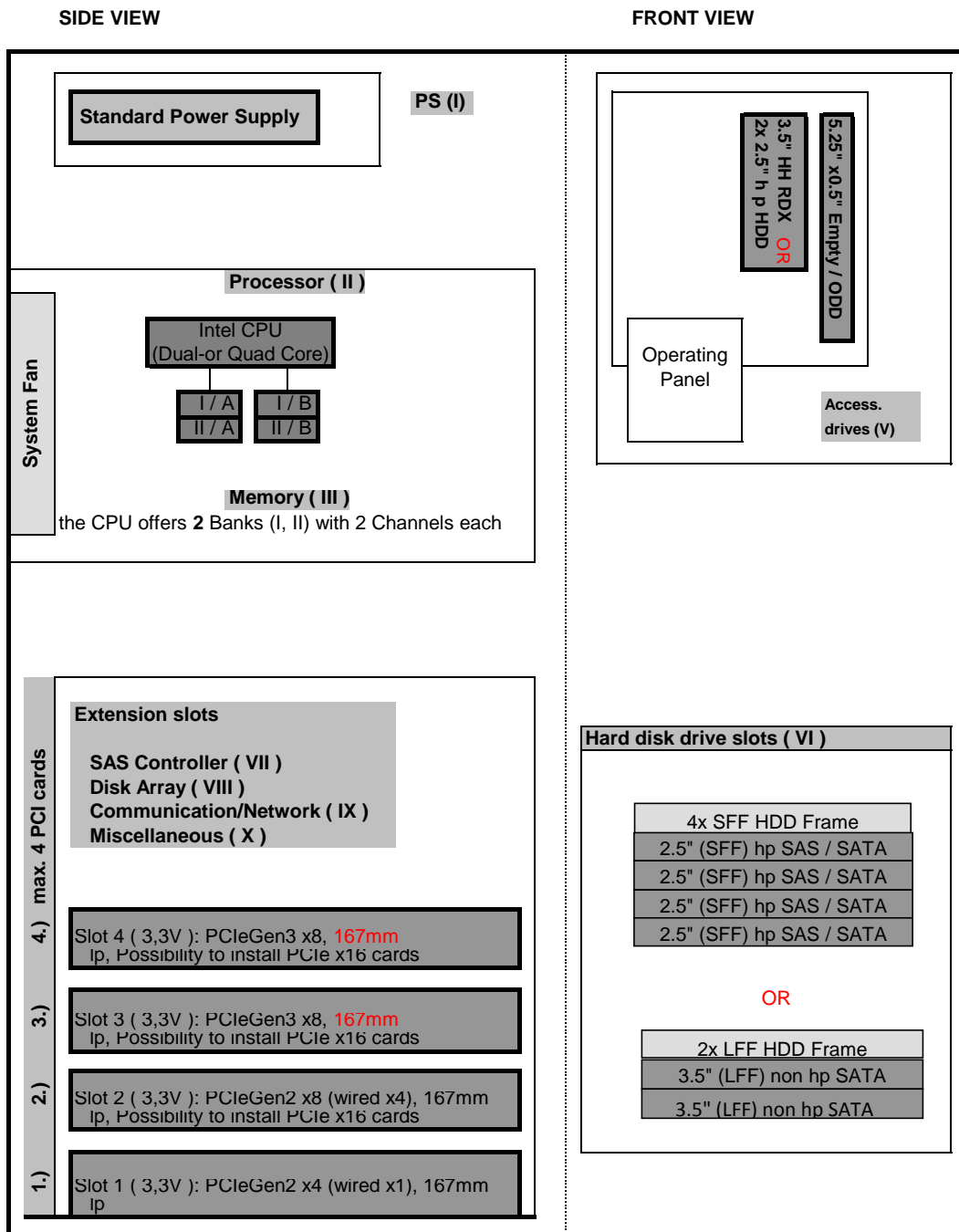
[http://ts.fujitsu.com/products/standard\\_servers/inc](http://ts.fujitsu.com/products/standard_servers/inc) (internet)

[https://partners.ts.fujitsu.com/com/order-supply/configurators/primergy\\_config/Pages/default.aspx](https://partners.ts.fujitsu.com/com/order-supply/configurators/primergy_config/Pages/default.aspx) (extranet)

Prices and availability see price list and PC-/ System-Architect  
 Subject to change and errors excepted

## Configuration diagram PRIMERGY TX1320 M1


### System unit ( I )



Key:

 Included in basic unit

 Option

 CPU and one memory ( first memory ) has to be selected for an orderable basic unit.

**System unit Floorstand including:**

- \* **Two lockable front covers**
  - Door #1 for accessible drive bays
  - Door #2 for hot plug HDD bays (Type 1 base unit only)
  - Both doors may be locked or door #1 may be left open while door #2 is still locked
- \* **HD type depending on base unit:**
  - Type 1: 4x hot plug SFF (2.5") SAS or SATA HDD optionally extensible to 6x hot plug SFF (2.5")
  - Type 2: 2x non hot plug LFF (3.5") SATA HDD
- \* **1 power supply (Standard PSU with 250W)**
- \* **Two System fans ( No Hot-plug, No redundancy )**
- \* **1 bay 5.25" for accessible drives (slim line)**
- \* **1 bay 3.5" (HH) for RDX backup or 2x hot plug SFF (2.5") extension box (SFF base unit only)**
- Systemboard D3239 with:**
  - \* heat pipe for the CPU
  - \* Chipset Intel® C224 (codenamed Denlow Lynx Point Standard)
- \* **4 PCI slots:**
  - 1 x PCIe x16 Gen2 (lp)
  - 1 x PCIe x4 (x8 connected) Gen2 (lp)
  - 1 x PCIe x1 (x4 connected) Gen2 (lp)
- \* **4 memory slots 1 x 32Bit / PCI 33MHz-5V, (lp)**
  - Memory is divided into 4 DIMMs ( 2 channels with 2 slots per channel )
  - First Memory ( one module ) has to be selected for an orderable basic unit
  - Memory upgrade is possible module wise
  - SDDC (Chipkill) is not supported
- \* **SATA-Controller on board (supporting RAID 0/1/10)**
- \* **2x1 Gbit Ethernet LAN on board ( Intel Springville and Intel Clarkville ) with ToE;**
  - and iSCSI boot integrated in System BIOS as selectable option
- \* **iRMC S4 (integrated Remote Management Controller) on-board server management controller**
  - with dedicated 10/100/1000 Management LAN-port and
  - integrated graphics controller ( max. Resolution: 1600 x 1200 at 16 bpp)
- Interfaces:**
  - \* 1x RS-232-C (9-pin) (usable for BMC or OS or shared)
  - \* 1x VGA (15 pin)
  - \* 7x USB 2.0 ( UHCI ) with 480MBit/s (4x external at the rear, 2x external at the front, 1x internal for UFM, no USB wakeup)
  - \* 3x USB 3.0 ( UHCI ) with 5 GBit/s (2x external at the rear, 1x internal for backup device)
  - \* 2x LAN RJ45, 1x Service-LAN RJ45 switchable
- \***internal Cables:**
  - 1. SATA cable for BD/DVD.
  - 2. HDD Backplane cable (Type 1 base unit only) or SATA cable for up to 2 HDDs (Type 2 base unit only)
- \* **ServerView Suite Software Paket inkl. ServerView Installation Manager and Server Management Software**
- \* **Documentation engl. (multilingual on CD)**

A

Floorstand-version	
Basic unit without CPU and Memory	
- One CPU has to be configured additionally for a base configuration	
- One memory kit has to be configured for a base configuration	
SFF (2.5") Base Unit (Type 1)	S26361-K1536-V101
LFF (3.5") Base Unit (Type 2)	S26361-K1536-V201

<b>S26361-F3552-E1</b>
TPM Module
Trusted Platform Module on Motherboard
Use according to import restrictions
max. 1x per system



Be aware of import restrictions!  
 Only 1 TPM per system.  
 Loose delivery for later integration possible for customer.

<b>S26361-F3552-L1</b>
TPM Module add-on kit
for later integration (loose delivery)
Trusted Platform Module on Motherboard
Use according to import restrictions
max. 1x per system

**Section II Processor**

One of following CPU's has to be selected for an orderable basic unit	
<b>Dual-Core CPU's</b>	
- 1x 64-bit Intel Pentium (3MB SLC) or Core-i3 (3MB TLC) occupies socket for one CPU	
<b>Celeron</b>	
Celeron G1820 2.7GHz 2C/2T 2MB 1333MHz (54W)	<b>S26361-F3581-E182</b> on special release
<b>Pentium</b>	
Pentium G3420 3.2GHz 2C/2T 3MB 1600MHz (54W)	<b>S26361-F3581-E232</b>
<b>Core i3</b>	
Core i3-4330 3.5GHz 2C/4T 4MB 1600MHz (54W)	<b>S26361-F3581-E243</b>
<b>Quad-Core XEON CPU's</b>	
- 1x 64-bit Intel Xeon UP (8MB shared TLC = Third Level Cache) Hyper-Threading; 1600 MHz DDR3 Bus and heat pipe occupies socket for one CPU	
Xeon E3-1220v3 3.1GHz 4C/4T 8MB 1600MHz Turbo (80W)	<b>S26361-F3581-E322</b>
Xeon E3-1231v3 3.3GHz 4C/8T 8MB 1600MHz Turbo (80W)	<b>S26361-F3581-E423</b>
Xeon E3-1241v3 3.4GHz 4C/8T 8MB 1600MHz Turbo (80W)	<b>S26361-F3581-E424</b> on special release
Xeon E3-1271v3 3.5GHz 4C/8T 8MB 1600MHz Turbo (80W)	<b>S26361-F3581-E427</b>
Xeon E3-1281v3 3.6GHz 4C/8T 8MB 1600MHz Turbo (82W)	<b>S26361-F3581-E428</b> on special release
<b>Xeon E3-12xxL Power Optimized</b>	
- 1x 64-bit Intel Xeon LV UP (8MB shared TLC = Third Level Cache) Hyper-Threading (HT); 1600 MHz DDR3 Bus and heat pipe occupies socket for one CPU	
Xeon E3-1240Lv3 2.0GHz 4C/8T 8MB 1600MHz Turbo (25W)	<b>S26361-F3581-E414</b>
Xeon E3-1275Lv3 2.7GHz 4C/8T 8MB 1600MHz Turbo (45W)	<b>S26361-F3581-E417</b>

B

B

**Section III Memory**

**i** There are 4 memory slots to be used for max. 4 unbuffered DIMMS.  
 => max. 32GB unbuffered DDR3 RAM for UDIMMs with 8GB modules

**Minimum one memory module or order code = first memory**

Unbuffered (ub) UDIMMs

- One <b>DDR3-</b> ub ECC memory module, 1.35V	
4GB (1x4GB) 2Rx8 L DDR3-1600 U ECC	<b>S26361-F5312-E514</b>
8GB (1x8GB) 2Rx8 L DDR3-1600 U ECC	<b>S26361-F5312-E518</b>
<b>Choose up to 4 order codes above.</b>	

4x

**Section IV Graphics**

**i** Graphics Controller integrated in iRMC with 32 MB attached Memory with following resolution:  
 - 16 bit color with maximum resolution of 1600 x 1200  
 - 24 bit color with maximum resolution of 1280 x 1024  
 - 32 bit color with maximum resolution of 1152 x 864  
 This resolution is also available via iRMC advance video redirection.  
**NOTE: Only VESA-compliant graphics modes are supported**

**i** For deliveries to China with CCC label no graphic card is allowed within the configuration.  
 It can be ordered as loose delivery only!

<i>as long</i>	<i>as available (end Q2/15)</i>
<b>S26361-F2748-E637</b>	
PY VGA LP card 512MB PCI-e x1	
NVIDIA NVS300	
512 MB PCI-e-x1	
2x DVI or 2x VGA or 1x DVI plus 1x VGA cables adapters included	
Dual head + fully 3-D supported for Windows OS only native driver support for Linux OS	
low profile bracket	
max. 1x per system	

**i** The high end optional NVIDIA NVS300 graphic card offers dual head operation and fully 3D video support.  
 The cables for either two times DVI or VGA connections are part of the delivery.  
**Remote Video direction via iRMC must be disabled.**  
 This PCIe-x1 card can also be installed in any PCIe-x4, x8 or x16 slot.  
 Only one card per server is allowed.

**PY VGA card must be installed in slot 2**

<b>S26361-F2748-L637</b>
PY VGA LP card 512MB PCI-e x1
for loose delivery

<i>as soon</i>	<i>as available (April 2015)</i>
<b>S26361-F2748-E538</b>	
PGRA CP NVS 1GB VGA PCIe x16	
NVIDIA NVS315	
1024 MB PCIe-x16	
Connectors: 1x LFH 59 cable kit for 2x DVI or 2x VGA cable kits included	
Dual head + professional 2-D + 3-D supported for Windows OS native driver support for Linux OS	
full height bracket	
max. 1x per system	

The high end optional NVIDIA NVS315 graphic card offers dual head operation and fully 3D video support.  
 The cables for either two times DVI-I or VGA connections are part of the delievery.  
**Remote Video direction via iRMC must be disabled.**  
 This PCIe-x16 card can also be installed in slit PCIe-x4, x8 or standard x16 slot.  
 Only one card per server is allowed.

**PY VGA card must be installed in slot 3**

<b>S26361-F2748-L538</b>
PGRA CP NVS 1GB VGA PCIe x16
for loose delivery

C

C

**Section V Accessible drives**

**i** There are 2 bays for accessible drives:  
 - 1x 5.25" bay is occupied by a 0.5" DVD respectively a DVD-RW drive  
 - 1 x 3.5" bay remaining, can be occupied by 1x 1.6" backup drive **OR**  
 HDD Extension Box for 2 addition hot plug SFF (2.5") drives (SFF base unit only)

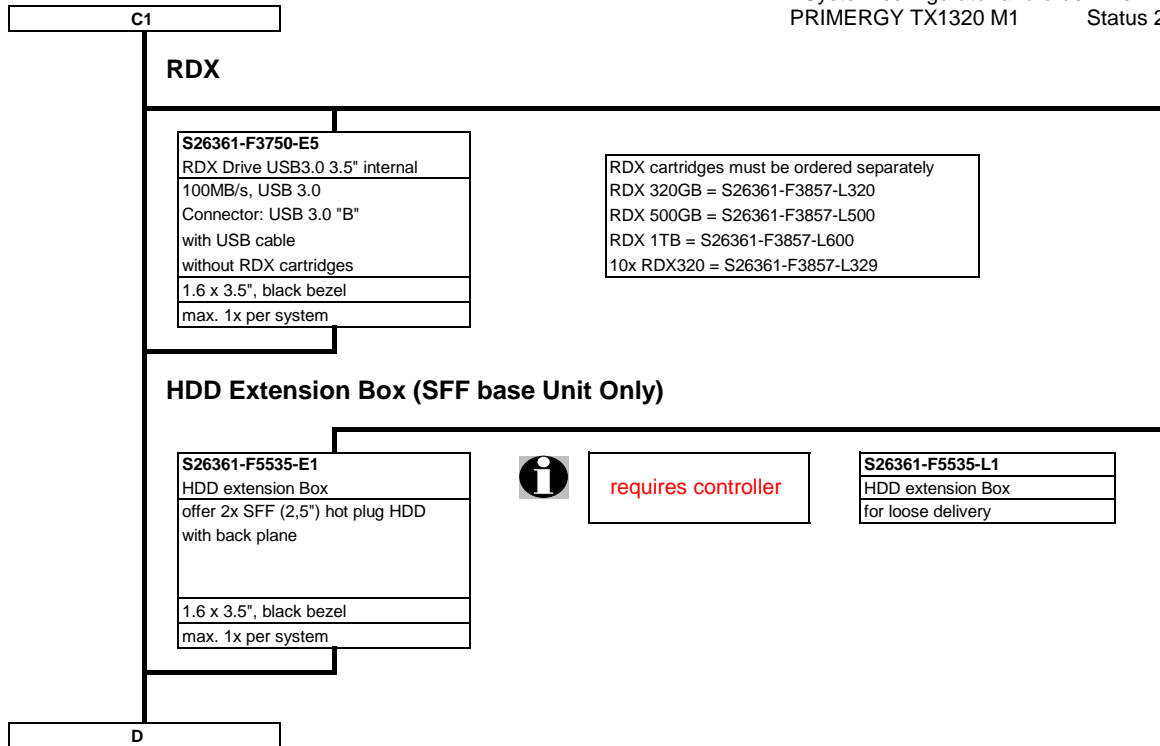
**i** Setup of PRIMERGY TX1320 M1 by ServerStart is supported with following configurations:  
**no DVD:**  
 remote installation only ( PXE service & DHCP server required)  
**built in DVD:**  
 UNC Network share reachable or USB Floppy or MemoryBird connected

<b>S26361-F3269-E2</b> DVD-RW supermulti slim SATA all formats, DUAL/DL, DVD-RAM  0.5 x 5.25", black bezel max. 1x per system	<b>S26361-F3641-E2</b> Blu-ray Triple Writer slim SATA 6x BD-RW, 8x DVD, 24x CD BD DL and all CD/DVD formats 0.5 x 5.25", black bezel max. 1x per system	<b>only in JP</b> <b>S26361-F3718-E1</b> DVD-ROM slim SATA 16x DVD 48x CD  0.5 x 5.25", black bezel max. 1x per system
--	---	--

<b>SSD SATADOM SATA 6Gb/s as boot device, non hot-plug</b>	
64GB, Endurance=172 TBW (Seq. write)	<b>S26361-F5533-E64</b>
128GB, Endurance=345 TBW (Seq. write)	<b>S26361-F5533-E128</b>
SATADOM is designed for use as a boot drive with the Endurance Spec. above.	
Vmware is not supported.	
<b>max. 1x per system, System On-board SATA Interface=3Gb/s</b>	

**i** **SATADOM connection**  
 If SATADOM is configured than ODD & UFM is not supported  
 Special release  
 Special release

C1





D

**Section VI a) Hard Disk Drives for Type 1 (SFF/2.5") Base Units**



Using Type 1 Base Unit up to 4 SATA or SAS SFF (2.5") hard disks can be configured.  
 SAS and BC SATA drives with the same size can be mixed, but not used in one logical RAID volume  
 SAS HDD requires SAS Controller  
 \*) SSD Read-Intensive Endurance=0.3DWPD over 5y  
 \*\*) SSD Mainstream Endurance=10DWPD over 5y

SSD SATA 6Gb/s 2.5" with hot plug/hot replace tray (H-P)	
120GB, Enterprise, Read-Intensive*	S26361-F5524-E120
240GB, Enterprise, Read-Intensive*	S26361-F5524-E240
480GB, Enterprise, Read-Intensive*	S26361-F5524-E480
800GB, Enterprise, Read-Intensive*	S26361-F5524-E800
100GB, Enterprise, Mainstream Endurance**	S26361-F5303-E100
200GB, Enterprise, Mainstream Endurance**	S26361-F5303-E200
max. 4x/6x per system	

Business Critical (BC) SATA 6Gb/s HD 2.5" with hot plug/hot replace tray	
250GB 7.200rpm, <9,5ms, 64MB Cache	S26361-F3708-E250
500GB 7.200rpm, <9,5ms, 64MB Cache	S26361-F3708-E500
1000GB 7.200rpm, <9,5ms, 64MB Cache	S26361-F3708-E1000
max. 4x/6x per system	

SAS 6Gb/s 2.5" with hot plug/hot replace tray	
300GB 10000rpm, <4,5ms, 32MB Cache	S26361-F5247-E130
450GB 10000rpm, <4,5ms, 32MB Cache	S26361-F5247-E145
600GB 10000rpm, <4,5ms, 32MB Cache	S26361-F5247-E160
900GB 10000rpm, <4,5ms, 32MB Cache	S26361-F5247-E190
1,2TB 10000rpm, <4,5ms, 64MB Cache	S26361-F5247-E112
146GB 15krpm, <4,5ms, 32MB Cache	S26361-F4482-E514
300GB 15krpm, <4,5ms, 32MB Cache	S26361-F4482-E530
450GB 15krpm, <3,0ms, 64MB Cache	S26361-F4482-E545
600GB 15krpm, <3,0ms, 64MB Cache	S26361-F4482-E560
SAS 12Gb/s 2.5" with hot plug/hot replace tray	
300GB 10000rpm, 128MB Cache, 512n	S26361-F5551-E130
600GB 10000rpm, 128MB Cache, 512n	S26361-F5551-E160
900GB 10000rpm, 128MB Cache, 512n	S26361-F5551-E190
1,2TB 10000rpm, 128MB Cache, 512n	S26361-F5551-E112
1,8TB 10000rpm, 128MB Cache, 512e	S26361-F5544-E118
max. 4x/6x per system	



**HDD 512e**  
 512e drives are not supported with the current versions of vSphere and VSAN

4x / 6x

**Section VI b) Hard Disk Drives for Type 2 (LFF/3.5") Base Units**



Using Type 2 Base Unit up to 2 SATA LFF (3.5") hard disks can be configured.

ECO SATA 6Gb/s HD 3.5" non hot plug	
250GB 7.200rpm, AF, <9,0ms, 16MB Cache	S26361-F3701-E250
500GB 7.200rpm, AF, <9,0ms, 16MB Cache	S26361-F3701-E500
Choose up to 2 order codes above.	

Business Critical (BC) SATA 6Gb/s HD 3.5" non hot plug	
500GB 7.200rpm, <9,0ms, 64MB Cache	S26361-F3671-E500
1000GB 7.200rpm, <9,0ms, 64MB Cache	S26361-F3671-E1000
2000GB 7.200rpm, <9,0ms, 64MB Cache	S26361-F3671-E2000
3000GB 7.200rpm, <9,0ms, 64MB Cache	S26361-F3671-E3000
4000GB 7.200rpm, <9,0ms, 64MB Cache	S26361-F3671-E4000
6000GB 7.200rpm, <9,0ms, 128MB Cache, 512e	S26361-F3905-E6000
Choose up to 2 order codes above.	

as soon as available

2x

E

E

**Section 8 VII SAS-Controller Low Profile**

**Section VIII Disk Array**

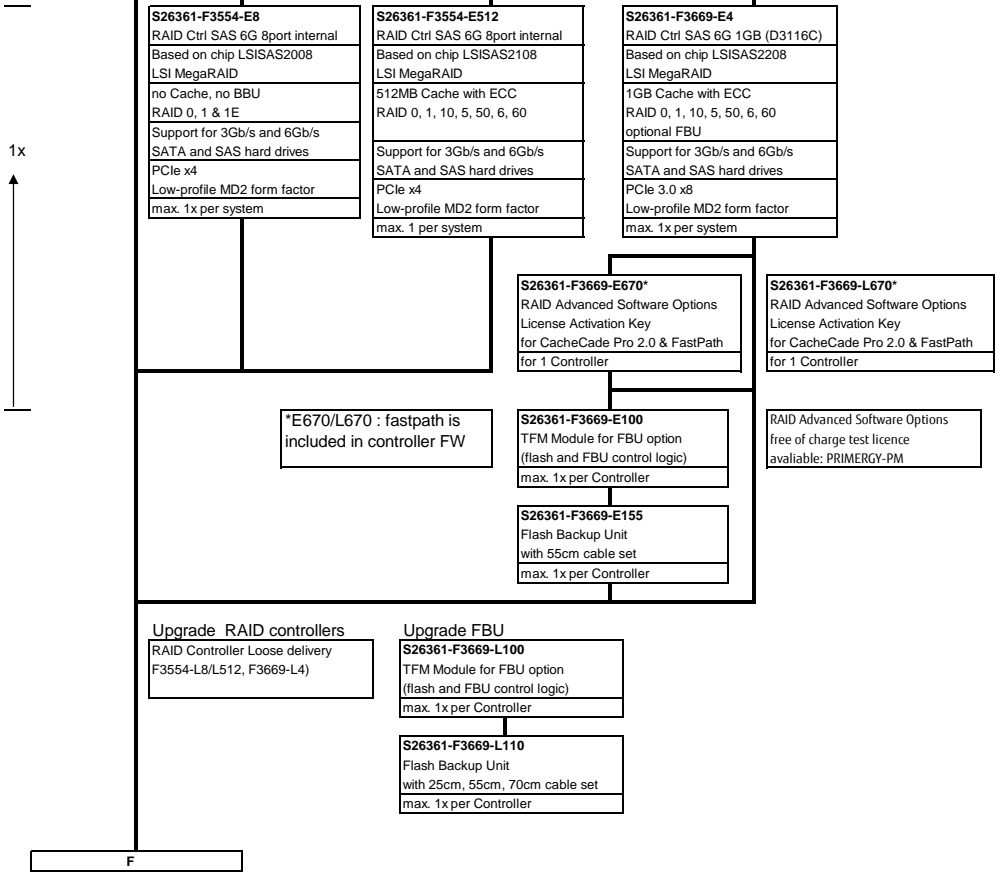
**SATA Configuration**

On board Hot Plug  
 SATA RAID Controller  
**RAID 0, 1**  
 MegaSR integrated into Intel C224  
 (Lynx Point Standard)  
 4-channel SATA RAID Controller  
 max. 600MB/s, with cable  
 1 HD per channel max.

**SAS or SATA Configuration**

- If you want to use SAS harddisks one SAS-Controller is required.  
**Mix of ECO SATA with SAS HDDs is not possible**
- S26361-F3669-E2/E3 does not support  
**3.5" ECO SATA HDD (S26361-F3701-E250/E500)**
- S26361-F3257-E4 4 port SAS RAID Controller - only for SAS HDDs!  
**up to 2TB support only!**
- you can choose between 3 types of 8 port SAS controller for the Base Unit:
  - LSI 2008 based Modular RAID 0,1 (IME)
  - LSI 2108 based Modular RAID 5,6
  - LSI 2208 based Modular RAID 5,6
 if you want to use SAS harddisks or more than 4 harddisks, then one Controller is required  
 On special request based on customising projects up to 2 SATA 2.5" SSDs can be configured without a controller  
**S26361-F3669-E4 does not support 3.5" ECO SATA HDD (S26361-F3700-E250/E500)**

Controller for 1 to 4/6 SFF (2.5") HDD; mandatory for SAS HDD's



F

F

**Section IX Communication / Network**

**2x on-board LAN Controller**

Fast Ethernet Controller on-board  
 Intel Springville + Clarkville  
 ext: 2x RJ 45-connector



**Teaming: Failover, Load Balancing**

The Intel LAN server adapter can be used with the on-board controller in Teaming Mode. Two onboard LAN ports can likewise educate a team.



**1Gbit/s Ethernet Adapter**

max 2

**S26361-F4610-E202**  
 (I350-T2)  
 Gbit Ethernet Controller Dual 1000TX LP  
 PLAN CP 2x1Gbit Cu Intel I350-T2 LP  
 Intel Powerville based 2 port Server Ad.  
 PCIe x4, Low Profile  
 low profile (LP) bracket  
 ext: for RJ45-plug, Cat 5  
 max. 2x per system

**S26361-F4610-E204**  
 (I350-T4)  
 Gbit Ethernet Controller Quad 1000TX LP  
 PLAN CP 4x1Gbit Cu Intel I350-T4 LP  
 Intel Powerville based 4 port Server Ad.  
 PCIe x4, Low Profile  
 low profile (LP) bracket  
 ext: for RJ45-plug, Cat 5  
 max. 2x per system

as long as stock lasts

**S26361-F3516-E201**  
 (Shelter Island)  
 Gigabit Ethernet Controller 1000TX  
 Eth Ctrl 1x1Gbit PCIe Gigabit CT DT Cu  
 Intel® Gigabit CT Desktop Adapter  
 PCIe x1  
 ext: for RJ45-connector, Cat 5  
 max. 2x per system

**S26361-F3852-E201**  
 (Intel I210-T1)  
 Gigabit Ethernet Controller 1000TX  
 PLAN AP 1x1Gbit Cu Intel I210-T1 LP  
 Single Port 1Gbit Server Adapter  
 PCIe x1  
 ext: for RJ45-connector  
 max. 2x per system

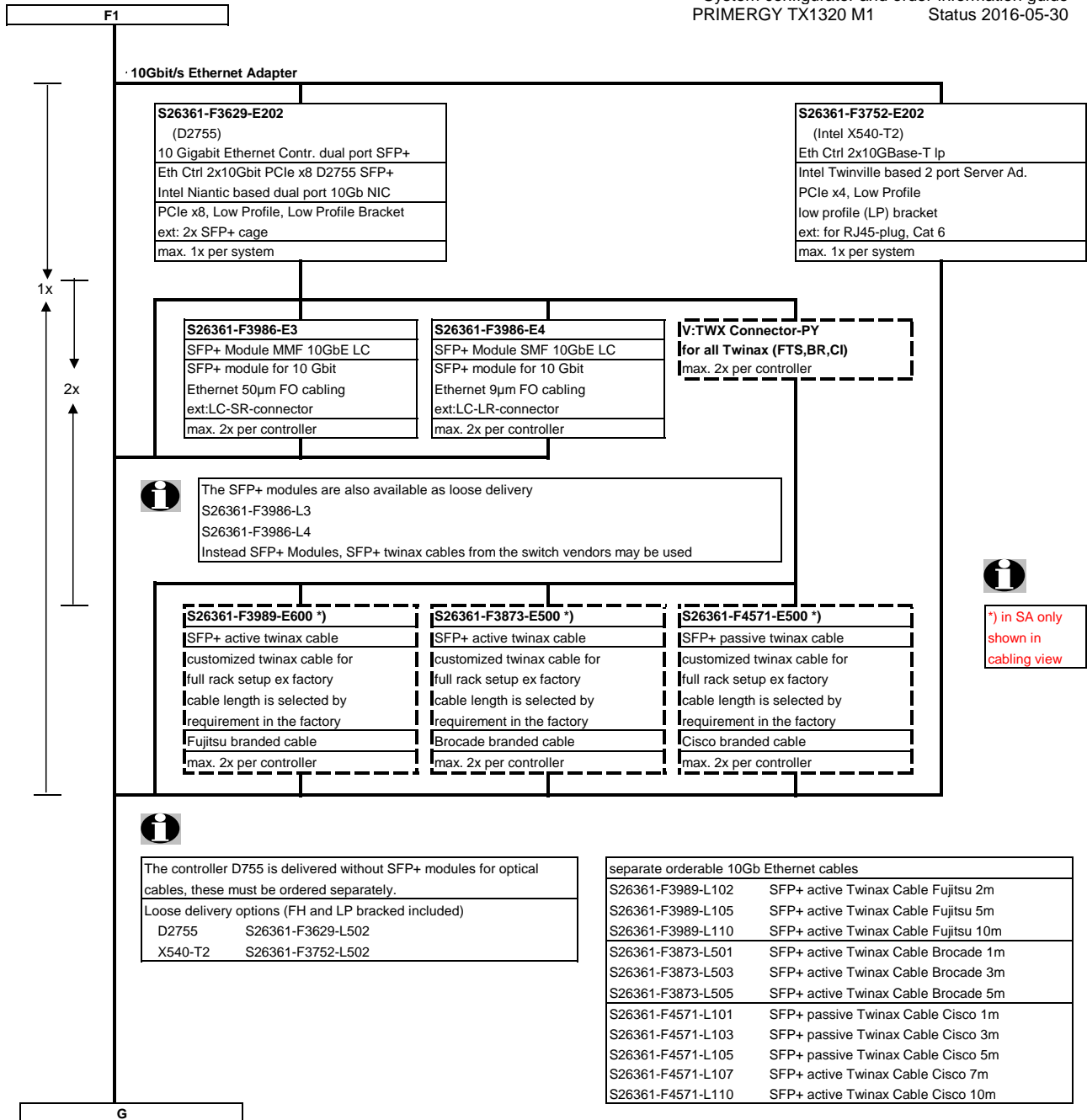


For deliveries to China with CCC label only  
**S26361-F3516-E1: GE controller 1000TX**  
 is allowed within the configuration.  
 All other controllers can be ordered  
 as loose delivery only!



Loose delivery with FH and LP bracket:  
 I210-T1 S26361-F3852-L501  
 I350-T2 S26361-F4610-L502  
 I350-T4 S26361-F4610-L504  
 Loose delivery with LP bracket:  
 Shelter Island S26361-F3516-L201


F1



H


**Section XI System management options**

**S26361-F1790-E243**  
**iRMC S4 advanced pack**  
integrated remote management controller  
activation key for  
graphical console redirection  
and remote media redirection  
max. 1x per system

 iRMC S4 (integrated Remote Management Controller) onboard Server Management Controller with dedicated 10/100/1000 Service LAN-port and integrated graphics.

**Section XII Miscellaneous**

**S26361-F1380-L120**  
**Security Cover**  
to lock all connectors of the I/O-shield  
including screw lock

 only FJ ,Japan

I

**Section XIII Country specific power cords / Kits**

**S26361-F3301-E120**  
CCC certification for China



Since beginning of 2012 the specifications for the approval and production monitoring for China (CCC) have become stricter. This is why the CCC certification label must in future be ordered separately

**S26361-F1452-E100**  
REGION KIT APAC/EMEA/India  
For Shipments to Asia pacific, EMEA or India regions  
1x per system

**S26361-F1452-E110**  
REGION KIT JP  
For Shipments to Japan regions  
1x per system

**S26361-F1452-E130**  
REGION KIT America  
For Shipments to America  
1x per system



A country specific power cord has to be ordered for all floorstand versions:  
- once per basic unit and an additional second cable  
- if an second hot plug, redundant power supply modul is ordered.

**Power cord for following countries:**

1.8m, black

T26139-Y1740-E10 D, A, B, F, NL, FIN, S, N, E, P, RUS, TR  
T26139-Y1742-E10 USA, Canada  
T26139-Y1743-E10 Switzerland  
T26139-Y1744-E10 UK, Ireland  
T26139-Y1745-E10 Italy  
T26139-Y1746-E10 Denmark  
T26139-Y1757-E10 Taiwan

2.5m, black

T26139-Y1751-E10 China  
T26139-Y3850-E10 Option "no powercord", for Countries without specific cable orderable

max.  
1 x



Country specific power cords are not required for rack versions, except for USA & Canada. Power cords are shipped in a rack version with inlet connector for non-heating apparatus. (1x with Standard PSU, 2x with hot plug upgrade)



**T26139-Y1742-E10 USA, Canada**

For shipments to USA&Canada, you have to order one power cord (1,8m, grey) per power supply.

**Optional Power cord, 1.8m, black, for the following countries:**

T26139-Y1740-L10 D, A, B, F, NL, FIN, N, S, E, P, RUS, TR  
T26139-Y1742-L10 USA, Canada  
T26139-Y1744-L10 UK, IR  
T26139-Y1745-L10 Italy  
T26139-Y1746-L10 Denmark  
T26139-Y1757-L10 Taiwan

**Optional Power cord, 2.5m, black, for the following countries:**

T26139-Y1751-L10 China



**Options and other peripherals**

For other options, refer to SystemArchitect and Pricelist.  
These options are supplied lose with the shipment.  
For suitable peripherals for this product, please refer to SystemArchitect.

**USB keyboards for floorstand versions for following countries:**

USB standard Keyboard KB521		USB professional Keyboard KBPC PX ECO
S26381-K521-E170	Switzerland	S26381-K341-E170
S26381-K521-E104	Czech/Slovak	S26381-K341-E104
S26381-K521-E120	Germany	S26381-K341-E120
S26381-K521-E180	Spain	S26381-K341-E180
S26381-K521-E140	France	S26381-K341-E140
S26381-K521-E165	United Kingdom	S26381-K341-E165
S26381-K521-E175	Portugal	
S26381-K521-E185	Italy	S26381-K341-E185
S26381-K521-E154	Sweden / Finland	S26381-K341-E154
S26381-K521-E110	USA	S26381-K341-E110

**USB Mouse:**

Mouse M520 Black	S26381-K467-E100	S26381-K467-L100
Mouse M520 Grey	S26381-K467-E101	S26381-K467-L101
Mouse M530 Grey (as soon as available)	n/a	S26381-K468-L101

End PRIMERGY TX1320 M1

## Change Report

Date	Order number	Changes
10.05.2016	S26361-F3669-E660/L660	removed
2016-04-05	T26139-Y1757-E10	added power cord for Taiwan
2016-03-14	T26139-Y1742-E10	changed color to black
2016-03-08	S26361-F3669-E670	added Advanced SW Option CacheCade with FastPath for free
2015-12-10	USB mouse portfolio	S26381-K457-E101/*-L101 mouse option removed (EOL)
2015-10-27	USB mouse portfolio	USB mouse order codes updated
2015-07-21		Added 2.5" SAS 12G 10K HDDs.
2015-06-11	T26139-Y1751-E10	Country specific power cords updated and china cable added
2015-02-23	S26361-F5533-E*	SATA-DOM added
2015-02-17	S26361-F3905-E600	3.5" 6TB SATA 6G 7.2Krpm 512e HDD added
2014-12-15	S26361-F2748-E538	PGRA CP NVS 1GB VGA PCIe x16 added plus EOL dates for predecessor / first delivery
2014-10-09	S26361-F3852-E201	added new Single Port 1Gbit NIC
2014-08-27	S26361-F5524-E80	80GB SSD removed.
2014-08-11		added partnumber for S26361-F5535-E/L1 for extention box
2014-08-01		First Release