

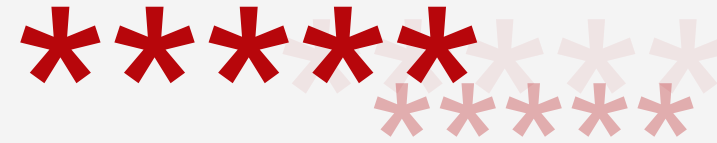
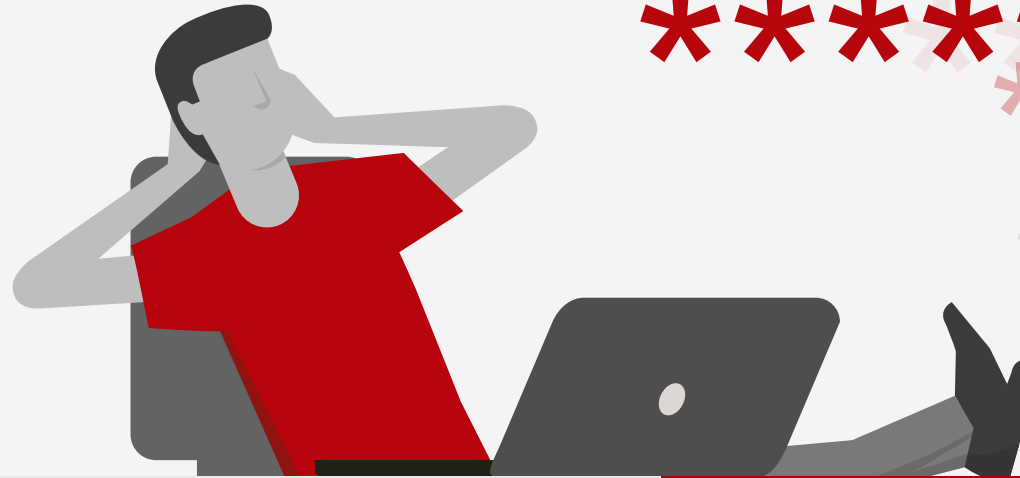
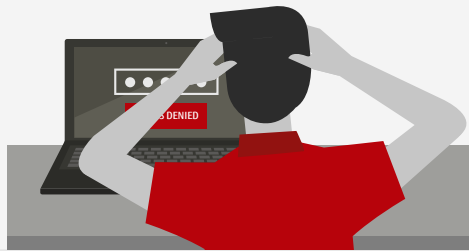
Fujitsu  
Security Solution  
AuthConductor™  
Client

FUJITSU



shaping tomorrow with you

# Forget your passwords. All of them.



## Sign on the easy way – with AuthConductor™ Client

Usernames and passwords might be the most common method of personal authentication, but they are arguably the weakest link in information security landscapes. Here are some of the challenges:



### Extra admin

On average, nearly eight in ten users admit they have forgotten a password in the last three months. Password resets eat up time and expense in admin.



### Data theft

Poor password security leaves organizations exposed to cyberattack and the risk of having data stolen.



### Data manipulation

Poor password security also increases the risk of data manipulation. This compromises its integrity – which may leave critical information unusable.

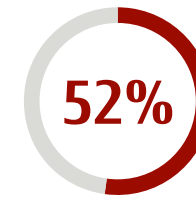
## Authenticate people, not passwords

There is a better way: biometric authentication with Fujitsu AuthConductor™ Client. Biometric authentication is all about you. Instead of keying in IDs and passwords when you sign into Windows or applications, all you need is your hand.



With AuthConductor™ Client by Fujitsu, you can sign on the easy way – and enjoy greater security in the modern economy with its all-digital, always-on focus.

## Difficulty remembering passwords causes people to take risks:



of people reuse same password for multiple accounts<sup>1</sup>



don't change passwords unless they have to<sup>2</sup>



of hacking breaches are password-related<sup>3</sup>

<sup>1</sup> Source: [http://services.google.com/fh/files/blogs/google\\_security\\_infographic.pdf](http://services.google.com/fh/files/blogs/google_security_infographic.pdf)

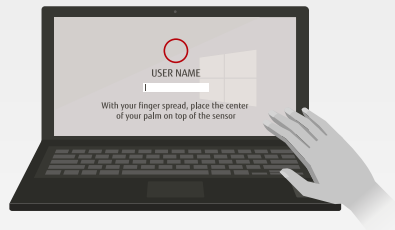
<sup>2</sup> Source: <https://www.prnewswire.com/news-releases/pc-matic-releases-2019-password-hygiene-and-habits-report-300898384.html>

<sup>3</sup> Source: Verizon 2019 Data Breach Investigations Report, <https://enterprise.verizon.com/resources/reports/dbir/>

# Make your working life easier with AuthConductor™ Client

Getting started is easy. You register your palm (or fingerprint) in AuthConductor™ Client, together with your usual sign-in data – your username and password. Once you've done this, you can authenticate yourself by passing your palm or fingerprint over the reader on your device.

## What you can do:



### Sign into Windows using just the palm of your hand

AuthConductor™ Client prompts you to pass your palm over the reader, and then you're ready to go!



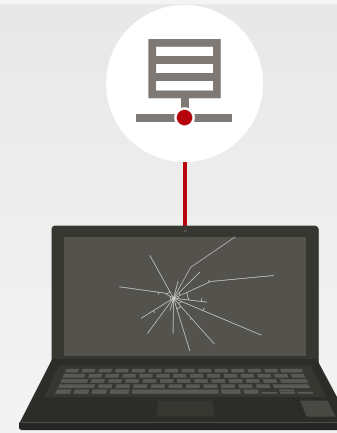
### Use single sign-in for applications

AuthConductor™ Client detects applications that require you to authenticate – even web applications. Just register your sign-in details – and the app then won't ask you for a password when it next launches. You can however choose to use biometrics at each sign in if you need extra-strict security.



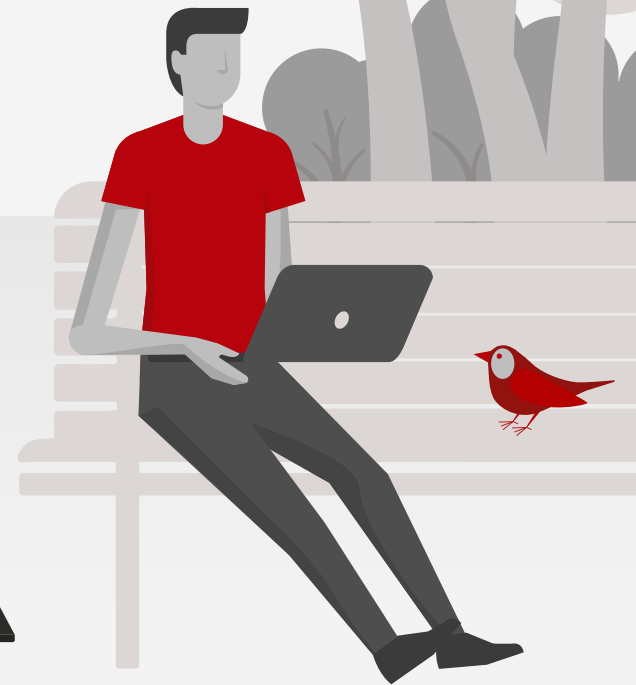
### Do biometric authentication at startup

If your Fujitsu PC has an embedded PalmSecure™ or fingerprint sensor, you can authenticate biometrically when you start your device.



### Keep your biometric data safe

AuthConductor™ Client can back up your biometric data to a different location. If you need to change devices, you can easily restore your sign-on data.



### Work indoors and outdoors

You can authenticate yourself indoors and outdoors for easy go-anywhere working (initial registration has to be completed indoors).

# Security with AuthConductor™ Client and PalmSecure™

Biometric information is the most reliable way to confirm identity, and the veins in the palm of the hand are perhaps the best way of all. Each individual has a vein pattern that is totally unique. Fujitsu's PalmSecure™ is the fastest, simplest, most versatile and efficient system available to verify identity:



**Certified technology** that organizations can trust to work effectively



**Totally fast authentication** via the natural motion of your hand



**Less intrusive** than an iris scanner which shines into the eye



**More private than a fingerprint** – veins are hidden under the skin



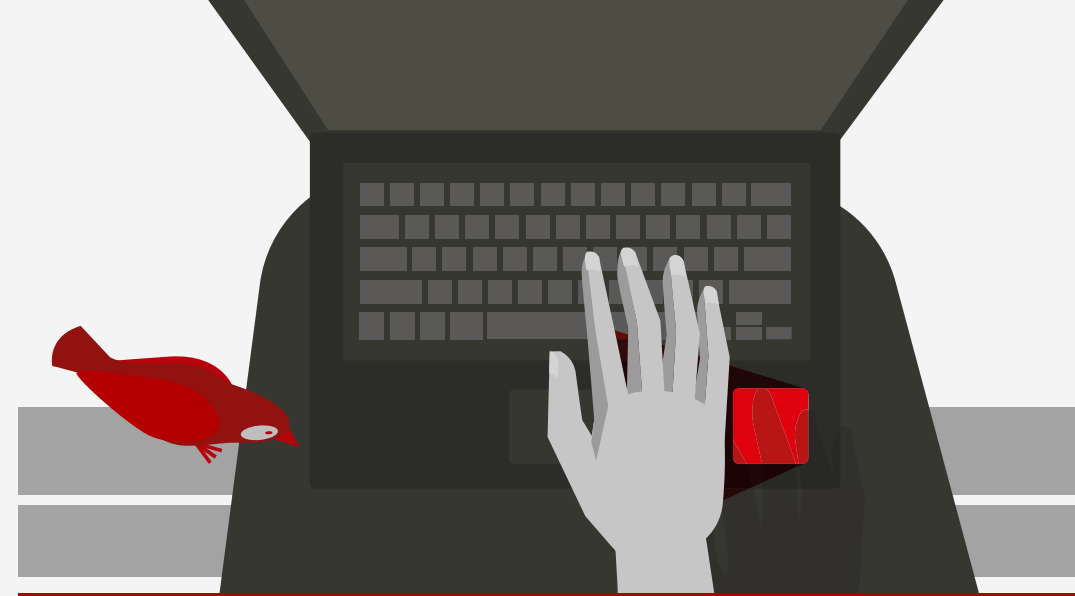
**More hygienic** – users don't even have to touch the pad








**More differentiating features** – over five million reference points per hand



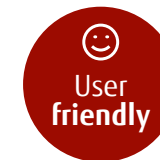
AuthConductor™ Client in combination with PalmSecure™ authenticates you on the basis of your unique palm veins. You're protected against password spying when you are working in public places, and there is no risk of forgetting or losing sign-in details. For extra peace of mind, all operations with AuthConductor™ Client are recorded in the Windows event log.



## PalmSecure™ compared to other biometric authentication methods

	 Iris	 Voice	 Face	 Fingerprint	 PalmSecure™
User friendly		■	■	■	■
Low cost		■	■	■	■
Accurate	■			■	■
Secure	■				■

Source: IEEE SPECTRUM



# Why AuthConductor™ Client makes business sense

As well as huge convenience for users, AuthConductor™ Client and biometric authentication also delivers compelling economics:



## Organizations save on the cost of password resets

Instead of unlocking user logins, administrators can spend time on more productive tasks.



Users self-register and self-authenticate in line with your corporate policy.



Without passwords as a security gap, there is far less exposure to the risk (and expense) of a security breach.

## Fujitsu is the specialist in biometric authentication

Fujitsu launched its first biometric authentication solutions as an alternative to ID and password authentication in 1999. Fujitsu makes your business more secure without making your life more complicated.



### From R&D to your desk:

Fujitsu does it all in-house



### The first PC manufacturer

to offer a biometric authentication product (since 1999)



### The only manufacturer

that supports palm vein authentication



Learn more about Fujitsu AuthConductor™ Client:  
→ [www.fujitsu.com/authentication](http://www.fujitsu.com/authentication)