

FUJITSU Storage ETERNUS AB/HB Series

Express Configuration For Windows®

Contents

Decide whether to use this Express Guide.....	3
Understand the workflow.....	5
Verify the Windows configuration is supported.....	6
Configure IP addresses using DHCP.....	7
Configure the multipath software.....	8
Installing SANtricity Windows DSM package.....	8
Install and configure Windows Unified Host Utilities 7.0.....	9
Install SANtricity System Manager for SMcli and Host Context Agent (HCA).....	10
Access SANtricity System Manager and use the Setup wizard.....	11
Perform FC-specific tasks.....	13
Configuring the FC switches - Windows.....	13
Determining host WWPNs and making the recommended settings - FC, Windows.....	13
FC worksheet for Windows.....	14
Perform iSCSI-specific tasks.....	15
Configuring the switches - iSCSI, Windows.....	15
Configuring networking - iSCSI Windows.....	15
Configuring array-side networking - iSCSI, Windows.....	15
Configuring host-side networking—iSCSI.....	17
Verifying IP network connections - iSCSI, Windows.....	18
Recording iSCSI-specific information for Windows.....	19
iSCSI worksheet - Windows.....	19
Perform SAS-specific tasks.....	21
Determining SAS host identifiers - Windows.....	21
Recording SAS-specific information for Windows.....	21
SAS worksheet - Windows.....	21
Discover storage on the host.....	23
Configure storage on the host.....	24
Verify storage access on the host.....	25
Where to find additional information - Windows.....	26
Copyright.....	27
Trademark.....	28
How to send comments about documentation and receive update notifications.....	29

Decide whether to use this Express Guide

The express method for installing your storage array and accessing SANtricity System Manager is appropriate for setting up a standalone Windows host to an ETERNUS AB/HB Series system. It is designed to get the storage system up and running as quickly as possible with minimal decision points.

The express method includes the following steps:

1. Setting up one of the following communication environments:

- Fibre Channel (FC)
- iSCSI
- SAS

2. Creating logical volumes on the storage array.

3. Making the volumes available to the data host.

This guide is based on the following assumptions:

Component	Assumptions
Hardware	<ul style="list-style-type: none">• You have used the Installation and Setup Instructions included with the controller shelves to install the hardware.• You have connected cables between the optional drive shelves and the controllers.• You have applied power to the storage system.• You have installed all other hardware (for example, management station, switches) and made the necessary connections.
Host	<ul style="list-style-type: none">• You have made a connection between the storage system and the data host.• You have installed the host operating system.• You are not using Windows as a virtualized guest.• You are not configuring the data (I/O attached) host to boot from SAN.
Storage management station	<ul style="list-style-type: none">• You are using a 1 Gbps or faster management network.• You are using a separate station for management rather than the data (I/O attached) host.• You are using out-of-band management, in which a storage management station sends commands to the storage system through the Ethernet connections to the controller.• You have attached the management station to the same subnet as the storage management ports.
IP addressing	<ul style="list-style-type: none">• You have installed and configured a DHCP server.• You have not yet made an Ethernet connection between the management station and the storage system.
Storage provisioning	<ul style="list-style-type: none">• You will not use shared volumes.• You will create pools rather than volume groups.
Protocol: FC	<ul style="list-style-type: none">• You have made all host-side FC connections and activated switch zoning.• You are using Fujitsu-supported FC HBAs and switches.• You are using FC HBA driver and firmware versions as listed in the Server Support Matrix.
Protocol: iSCSI	<ul style="list-style-type: none">• You are using Ethernet switches capable of transporting iSCSI traffic.• You have configured the Ethernet switches according to the vendor's recommendation for iSCSI.

Component	Assumptions
Protocol: SAS	<ul style="list-style-type: none">• You are using Fujitsu-supported SAS HBAs.• You are using SAS HBA driver and firmware versions as listed in the Server Support Matrix.

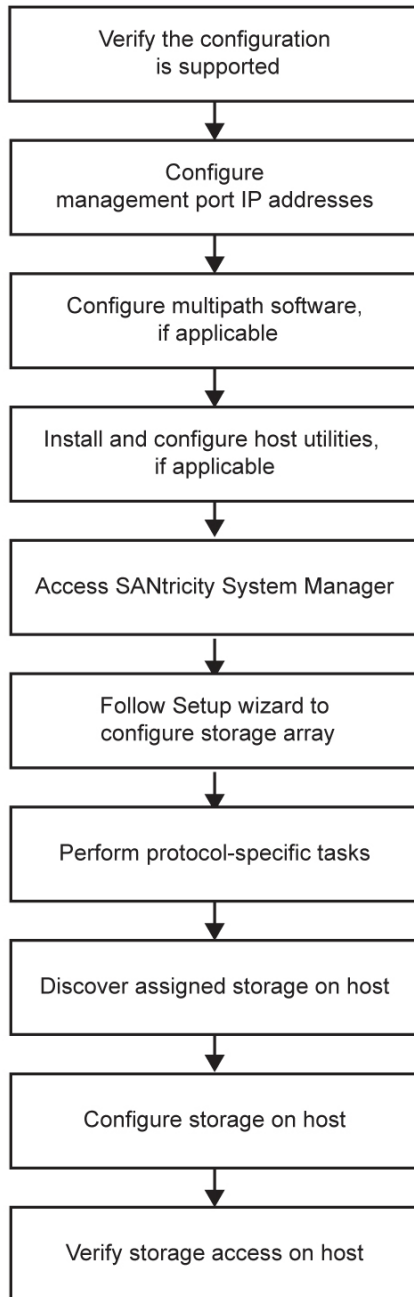
Related information

Server Support Matrix

[Linux express configuration](#)

Understand the workflow

This workflow guides you through the express method for configuring your storage array and SANtricity System Manager to make storage available to a host.



Verify the Windows configuration is supported

To ensure reliable operation, you create an implementation plan and then use Server Support Matrix to verify that the entire configuration is supported.

Configure IP addresses using DHCP

In this express method for configuring communications between the management station and the storage array, you use Dynamic Host Configuration Protocol (DHCP) to provide IP addresses. Each storage array has either one controller (simplex) or two controllers (duplex), and each controller has two storage management ports. Each management port will be assigned an IP address.

Before you begin

You have installed and configured a DHCP server on the same subnet as the storage management ports.

About this task

The following instructions refer to a storage array with two controllers (a duplex configuration).

1. If you have not already done so, connect an Ethernet cable to the management station and to management port 1 on each controller (A and B).

The DHCP server assigns an IP address to port 1 of each controller.

Note: Do not use management port 2 on either controller. Port 2 is reserved for use by Fujitsu personnel.

Important: If you disconnect and reconnect the Ethernet cable, or if the storage array is power-cycled, DHCP assigns IP addresses again. This process occurs until static IP addresses are configured. It is recommended that you avoid disconnecting the cable or power-cycling the array.

If the storage array cannot get DHCP-assigned IP addresses within 30 seconds, the following default IP addresses are set:

- Controller A, port 1: 169.254.128.101
 - Controller B, port 1: 169.254.128.102
 - Subnet mask: 255.255.0.0
2. Locate the MAC address label on the back of each controller, and then provide your network administrator with the MAC address for port 1 of each controller.

Your network administrator needs the MAC addresses to determine the IP address for each controller. You will need the IP addresses to connect to your storage system through your browser.

Configure the multipath software

Multipath software provides a redundant path to the storage array in case one of the physical paths is disrupted. Before you can use multipathing, you need to install the SANtricity Windows DSM package. This package contains the multipath software for Windows.

About this task

Windows installations use the native MPIO Device Specific Module (DSM) driver for failover. When you install and enable the `SANtricity Windows DSM` package, you do not need to take further action to use multipath.

Installing SANtricity Windows DSM package

Perform the following steps to install the `SANtricity Windows DSM` package and use the multipath package for Windows.

Before you begin

- You must have the correct administrator or superuser privileges.

About this task

You will install the `SANtricity Windows DSM` package on the management station.

Procedure

1. Download the `SANtricity Windows DSM` package.
2. Run the `SANtricity Windows DSM` installer. Double-click the install package to execute.
3. Use the installation wizard to install the package on the management station.

Install and configure Windows Unified Host Utilities 7.0

Windows Unified Host Utilities 7.0 includes tools to enable you to connect host computers to storage systems and set required parameters on host computers. You can also set appropriate disk timeouts for best read/write performance with storage.

About this task

- Use the Server Support Matrix to determine the appropriate version of Unified Host Utilities 7.0 to install.
- Download the Unified Host Utilities 7.0.

Procedure

1. Use the Server Support Matrix to determine the appropriate version of Unified Host Utilities 7.0 to install.
2. Download the Unified Host Utilities 7.0.

Note: Alternatively, you can use the SANtricity `SMdevices` utility to perform the same functions as the Unified Host Utility tool. The `SMdevices` utility is included as part of the `SMutils` package. The `SMutils` package is a collection of utilities to verify what the host sees from the storage array. It is included as part of the SANtricity software installation.

Install SANtricity System Manager for SMcli and Host Context Agent (HCA)

When you install the SANtricity System Manager software on your management station, the command line interface (CLI) is installed to help you manage your array. By also installing the software on the host, the Host Context Agent is installed that helps the host push configuration information to the storage array controllers through the I/O path.

Before you begin

- You must have the correct administrator or superuser privileges.
- You must have ensured that the system that will contain the SANtricity System Manager client has the following minimum requirements:
 - **RAM:** 2 GB for Java Runtime Engine
 - **Disk space:** 5 GB
 - **OS/Architecture:** Refer to Server Support Matrix for guidance on determining the supported operating system versions and architectures.

About this task

Procedure

1. Download the SANtricity software release.
2. Run the SANtricity installer. Double-click the `SMIA*.exe` install package to execute.
3. Use the installation wizard to install the software on the management station.

Access SANtricity System Manager and use the Setup wizard

You use the Setup wizard in SANtricity System Manager to configure your storage array.

Before you begin

- You have ensured that the device from which you will access SANtricity System Manager contains one of the following browsers:

Browser	Minimum version
Google Chrome	47
Microsoft Internet Explorer	11
Microsoft Edge	EdgeHTML 12
Mozilla Firefox	31
Safari	9

- You are using out-of-band management.

About this task

If you are an iSCSI user, make sure you have closed the Setup wizard while configuring iSCSI.

The wizard automatically relaunches when you open System Manager or refresh your browser and *at least one* of the following conditions is met:

- No pools and volume groups are detected.
- No workloads are detected.
- No notifications are configured.

If the Setup wizard does not automatically appear, contact technical support.

Procedure

- From your browser, enter the following URL: `https://<DomainNameOrIPAddress>`

`IPAddress` is the address for one of the storage array controllers.

The first time SANtricity System Manager is opened on an array that has not been configured, the `Set Administrator Password` prompt appears. Role-based access management configures four local roles: admin, support, security, and monitor. The latter three roles have random passwords that cannot be guessed. After you set a password for the admin role you can change all of the passwords using the admin credentials. See *SANtricity System Manager online help* for more information on the four local user roles.

- Enter the System Manager password for the admin role in the `Set Administrator Password` and `Confirm Password` fields, and then select the **Set Password** button.
When you open System Manager and no pools, volumes groups, workloads, or notifications have been configured, the Setup wizard launches.
- Use the Setup wizard to perform the following tasks:
 - Verify hardware (controllers and drives)** – Verify the number of controllers and drives in the storage array. Assign a name to the array.
 - Verify hosts and operating systems** – Verify the host and operating system types that the storage array can access.
 - Accept pools** – Accept the recommended pool configuration for the express installation method. A pool is a logical group of drives.
 - Configure alerts** – Allow System Manager to receive automatic notifications when a problem occurs with the storage array.
 - Enable AutoSupport** – Automatically monitor the health of your storage array and have dispatches sent to technical support.

4. If you have not already created a volume, create one by going to **Storage > Volumes > Create > Volume**.
For more information, see the online help for SANtricity System Manager.

Perform FC-specific tasks

For the Fibre Channel protocol, you configure the switches and determine the host port identifiers.

Configuring the FC switches - Windows

Configuring (zoning) the Fibre Channel (FC) switches enables the hosts to connect to the storage array and limits the number of paths. You zone the switches using the management interface for the switches.

Before you begin

- You must have administrator credentials for the switches.
- You must have used your HBA utility to discover the WWPN of each host initiator port and of each controller target port connected to the switch.

About this task

For details about zoning your switches, see the switch vendor's documentation.

You must zone by WWPN, not by physical port. Each initiator port must be in a separate zone with all of its corresponding target ports.

Procedure

1. Log in to the FC switch administration program, and then select the zoning configuration option.
2. Create a new zone that includes the first host initiator port and that also includes all of the target ports that connect to the same FC switch as the initiator.
3. Create additional zones for each FC host initiator port in the switch.
4. Save the zones, and then activate the new zoning configuration.

Determining host WWPNs and making the recommended settings - FC, Windows

You install an FC HBA utility so you can view the worldwide port name (WWPN) of each host port. Additionally, you can use the HBA utility to change any settings recommended in the Notes column of the Server Support Matrix for the supported configuration.

About this task

Guidelines for HBA utilities:

- Most HBA vendors offer an HBA utility. You will need the correct version of HBA for your host operating system and CPU. Examples of FC HBA utilities include:
 - Emulex OneCommand Manager for Emulex HBAs
 - QLogic QConverge Console for QLogic HBAs
- Host I/O ports might automatically register if the host context agent is installed.

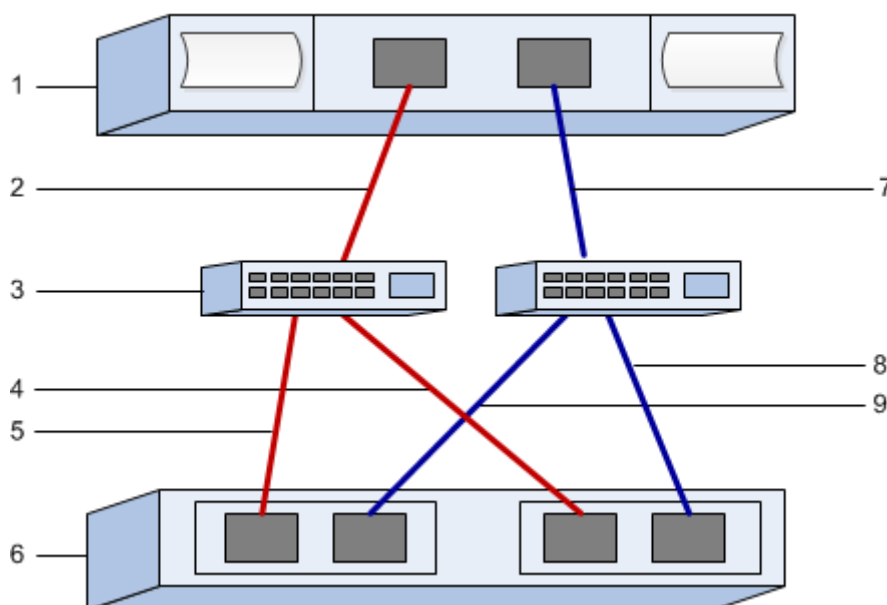
Procedure

1. Download the appropriate utility from your HBA vendor's web site.
2. Install the utility.
3. Select the appropriate settings in the HBA utility.

FC worksheet for Windows

You can use this worksheet to record FC storage configuration information. You need this information to perform provisioning tasks.

The illustration shows a host connected to an ETERNUS AB/HB Series storage array in two zones. One zone is indicated by the blue line; the other zone is indicated by the red line. Any single port has two paths to the storage (one to each controller).



Host identifiers

Callout No.	Host (initiator) port connections	WWPN
1	Host	<i>not applicable</i>
2	Host port 0 to FC switch zone 0	
7	Host port 1 to FC switch zone 1	

Target identifiers

Callout No.	Array controller (target) port connections	WWPN
3	Switch	<i>not applicable</i>
6	Array controller (target)	<i>not applicable</i>
5	Controller A, port 1 to FC switch 1	
9	Controller A, port 2 to FC switch 2	
4	Controller B, port 1 to FC switch 1	
8	Controller B, port 2 to FC switch 2	

Mapping host

Mapping host name	
Host OS type	

Perform iSCSI-specific tasks

For the iSCSI protocol, you configure the switches and configure networking on the array side and the host side. Then you verify the IP network connections.

Configuring the switches - iSCSI, Windows

You configure the switches according to the vendor's recommendations for iSCSI. These recommendations might include both configuration directives as well as code updates.

You must ensure the following:

- You have two separate networks for high availability. Make sure that you isolate your iSCSI traffic to separate network segments by using VLANs or two separate networks.
- You have enabled send and receive hardware flow control **end to end**.
- You have disabled priority flow control.
- If appropriate, you have enabled jumbo frames.

Note: Port channels/LACP is not supported on the controller's switch ports. Host-side LACP is not recommended; multipathing provides the same, and in some cases better, benefits.

Configuring networking - iSCSI Windows

You can set up your iSCSI network in many ways, depending on your data storage requirements.

Consult your network administrator for tips on selecting the best configuration for your environment.

An effective strategy for configuring the iSCSI network with basic redundancy is to connect each host port and one port from each controller to separate switches and partition each set of host and controller ports on separate network segments using VLANs.

You must enable send and receive hardware flow control **end to end**. You must disable priority flow control.

If you are using jumbo frames within the IP SAN for performance reasons, make sure to configure the array, switches, and hosts to use jumbo frames. Consult your operating system and switch documentation for information on how to enable jumbo frames on the hosts and on the switches. To enable jumbo frames on the array, complete the steps in *Configuring array-side networking-iSCSI*.

Note: Many network switches have to be configured above 9,000 bytes for IP overhead. Consult your switch documentation for more information.

Configuring array-side networking - iSCSI, Windows

You use the SANtricity System Manager GUI to configure iSCSI networking on the array side.

Before you begin

- You must know the IP address or domain name for one of the storage array controllers.
- You or your system administrator must have set up a password for the System Manager GUI, or you must configured Role-Based Access Control (RBAC) or LDAP and a directory service for the appropriate security access to the storage array. See the *SANtricity System Manager online help* for more information about Access Management.

About this task

This task describes how to access the iSCSI port configuration from the Hardware page. You can also access the configuration from **System > Settings > Configure iSCSI ports**.

Procedure

1. From your browser, enter the following URL: `https://<DomainNameOrIPAddress>`

`IPAddress` is the address for one of the storage array controllers.

The first time SANtricity System Manager is opened on an array that has not been configured, the `Set Administrator Password` prompt appears. Role-based access management configures four local roles: admin, support, security, and monitor. The latter three roles have random passwords that cannot be guessed. After you set a password for the admin role you can change all of the passwords using the admin credentials. See *SANtricity System Manager online help* for more information on the four local user roles.

2. Enter the System Manager password for the admin role in the `Set Administrator Password` and `Confirm Password` fields, and then select the **Set Password** button.

When you open System Manager and no pools, volumes groups, workloads, or notifications have been configured, the Setup wizard launches.

3. Close the Setup wizard.

You will use the wizard later to complete additional setup tasks.

4. Select **Hardware**.

5. If the graphic shows the drives, click **Show back of shelf**.

The graphic changes to show the controllers instead of the drives.

6. Click the controller with the iSCSI ports you want to configure.

The controller's context menu appears.

7. Select **Configure iSCSI ports**.

The Configure iSCSI Ports dialog box opens.

8. In the drop-down list, select the port you want to configure, and then click **Next**.

9. Select the configuration port settings, and then click **Next**.

To see all port settings, click the **Show more port settings** link on the right of the dialog box.

Port Setting	Description
Configured ethernet port speed	<p>Select the desired speed.</p> <p>The options that appear in the drop-down list depend on the maximum speed that your network can support (for example, 10 Gbps).</p> <p>Note: The optional iSCSI host interface cards in the HB5000 and AB5100 controllers do not auto-negotiate speeds. You must set the speed for each port to either 10 Gbps or 25 Gbps. All ports must be set to the same speed.</p>
Enable IPv4 / Enable IPv6	Select one or both options to enable support for IPv4 and IPv6 networks.
TCP listening port (Available by clicking Show more port settings .)	<p>If necessary, enter a new port number.</p> <p>The listening port is the TCP port number that the controller uses to listen for iSCSI logins from host iSCSI initiators. The default listening port is 3260. You must enter 3260 or a value between 49152 and 65535.</p>
MTU size (Available by clicking Show more port settings .)	<p>If necessary, enter a new size in bytes for the Maximum Transmission Unit (MTU).</p> <p>The default Maximum Transmission Unit (MTU) size is 1500 bytes per frame. You must enter a value between 1500 and 9000.</p>
Enable ICMP PING responses	Select this option to enable the Internet Control Message Protocol (ICMP). The operating systems of networked computers use this protocol to send messages. These ICMP messages determine whether a host is reachable and how long it takes to get packets to and from that host.

If you selected **Enable IPv4**, a dialog box opens for selecting IPv4 settings after you click **Next**. If you selected **Enable IPv6**, a dialog box opens for selecting IPv6 settings after you click **Next**. If you selected both options, the dialog box for IPv4 settings opens first, and then after you click **Next**, the dialog box for IPv6 settings opens.

10. Configure the IPv4 and/or IPv6 settings, either automatically or manually. To see all port settings, click the **Show more settings** link on the right of the dialog box.

Port setting	Description
Automatically obtain configuration	Select this option to obtain the configuration automatically.
Manually specify static configuration	Select this option, and then enter a static address in the fields. For IPv4, include the network subnet mask and gateway. For IPv6, include the routable IP address and router IP address.
Enable VLAN support (Available by clicking Show more settings .)	Important: This option is only available in an iSCSI environment. It is not available in an NVMe over RoCE environment. Select this option to enable a VLAN and enter its ID. A VLAN is a logical network that behaves like it is physically separate from other physical and virtual local area networks (LANs) supported by the same switches, the same routers, or both.
Enable ethernet priority (Available by clicking Show more settings .)	Important: This option is only available in an iSCSI environment. It is not available in an NVMe over RoCE environment. Select this option to enable the parameter that determines the priority of accessing the network. Use the slider to select a priority between 1 and 7. In a shared local area network (LAN) environment, such as Ethernet, many stations might contend for access to the network. Access is on a first-come, first-served basis. Two stations might try to access the network at the same time, which causes both stations to back off and wait before trying again. This process is minimized for switched Ethernet, where only one station is connected to a switch port.

11. Click **Finish**.

12. Close System Manager.

Related tasks

[Access SANtricity System Manager and use the Setup wizard](#) on page 11

Configuring host-side networking—iSCSI

You must configure iSCSI networking on the host side so that the Microsoft iSCSI Initiator can establish sessions with the array.

Before you begin

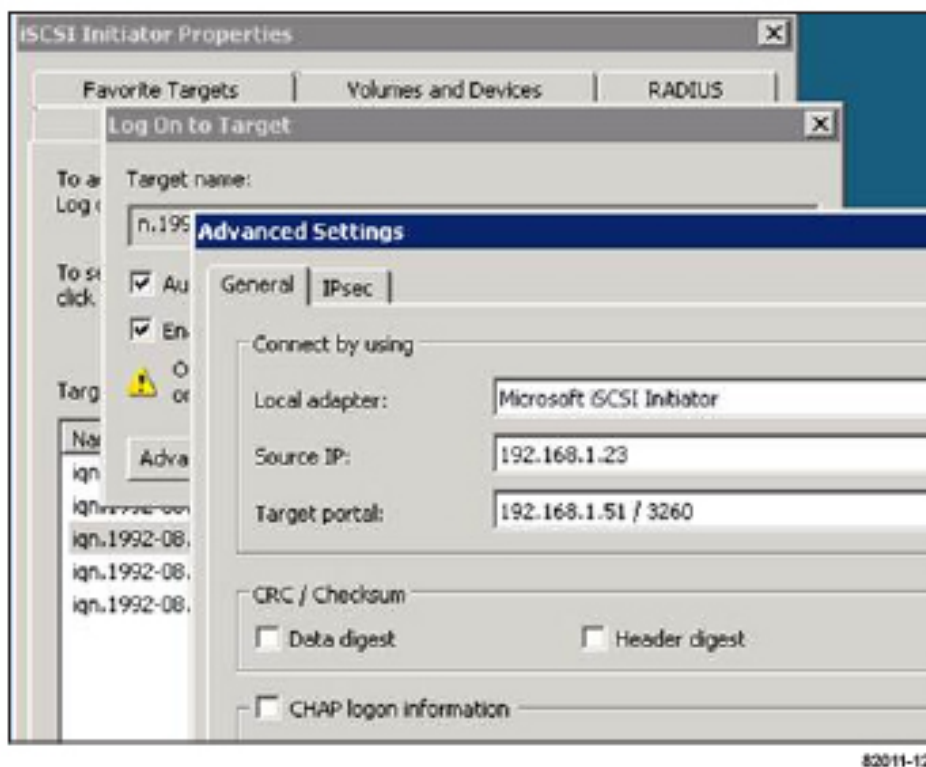
- You have fully configured the switches that will be used to carry iSCSI storage traffic.
- You must have enabled send and receive hardware flow control **end to end** and disabled priority flow control.
- You have completed the array side iSCSI configuration.
- You must know the IP address of each port on the controller.

About this task

These instructions assume that two NIC ports will be used for iSCSI traffic.

Procedure

1. Disable unused network adapter protocols.
These protocols include, but are not limited to, QoS, File and Print Sharing, and NetBIOS.
2. Execute `> iscsicpl.exe` from a terminal window on the host to open the **iSCSI Initiator Properties** dialog box.
3. On the **Discovery** tab, select **Discover Portal**, and then enter the IP address of one of the iSCSI target ports.
4. On the **Targets** tab, select the first target portal you discovered and then select **Connect**.
5. Select **Enable multi-path**, select **Add this connection to the list of Favorite Targets**, and then select **Advanced**.
6. For **Local adapter**, select **Microsoft iSCSI Initiator**.
7. For **Initiator IP**, select the IP address of a port on the same subnet or VLAN as one of the iSCSI targets.
8. For **Target IP**, select the IP address of a port on the same subnet as the **Initiator IP** selected in the step above.
9. Retain the default values for the remaining check boxes, and then select **OK**.
10. Select **OK** again as you return to the **Connect to Target** dialog box.
11. Repeat this procedure for each initiator port and session (logical path) to the storage array that you want to establish.



8/2011-12

Verifying IP network connections - iSCSI, Windows

You verify Internet Protocol (IP) network connections by using ping tests to ensure the host and array are able to communicate.

Procedure

1. Select **Start > All Programs > Accessories > Command Prompt**, and use the Windows CLI to run one of the following commands, depending on whether jumbo frames are enabled:
 - If jumbo frames are not enabled, run this command:

```
ping -s <hostIP> <targetIP>
```

- If jumbo frames are enabled, run the `ping` command with a payload size of 8,972 bytes. The IP and ICMP combined headers are 28 bytes, which when added to the payload, equals 9,000 bytes. The `-f` switch sets the don't fragment (DF) bit. The `-l` switch allows you to set the size. These options allow jumbo frames of 9,000 bytes to be successfully transmitted between the iSCSI initiator and the target.

```
ping -l 8972 -f <iSCSI_target_IP_address>
```

In this example, the iSCSI target IP address is 192.0.2.8.

```
C:\>ping -l 8972 -f 192.0.2.8
Pinging 192.0.2.8 with 8972 bytes of data:
Reply from 192.0.2.8: bytes=8972 time=2ms TTL=64
Reply from 192.0.2.8: bytes=8972 time=2ms TTL=64
Reply from 192.0.2.8: bytes=8972 time=2ms TTL=64
Reply from 192.0.2.8: bytes=8972 time=2ms TTL=64
Ping statistics for 192.0.2.8:
    Packets: Sent = 4, Received = 4, Lost = 0 (0% loss),
    Approximate round trip times in milli-seconds:
        Minimum = 2ms, Maximum = 2ms, Average = 2ms
```

2. Issue a `ping` command from each host's initiator address (the IP address of the host Ethernet port used for iSCSI) to each controller iSCSI port. Perform this action from each host server in the configuration, changing the IP addresses as necessary.

Note: If the command fails (for example, returns `Packet needs to be fragmented but DF set`), verify the MTU size (jumbo frame support) for the Ethernet interfaces on the host server, storage controller, and switch ports.

Recording iSCSI-specific information for Windows

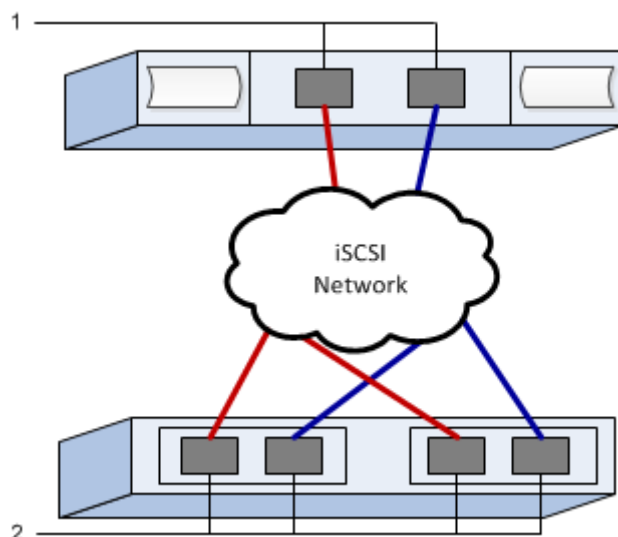
Select the iSCSI worksheet to record your protocol-specific storage configuration information. You need this information to perform provisioning tasks.

iSCSI worksheet - Windows

You can use this worksheet to record iSCSI storage configuration information. You need this information to perform provisioning tasks.

Recommended configuration

Recommended configurations consist of two initiator ports and four target ports with one or more VLANs.



Target IQN

Callout No.	Target port connection	IQN
2	Target port	

Mappings host name

Callout No.	Host information	Name and type
1	Mappings host name	
	Host OS type	

Perform SAS-specific tasks

For the SAS protocol, you determine host port addresses and make the settings recommended in the Notes column of the Server Support Matrix .

Determining SAS host identifiers - Windows

For the SAS protocol, you find the SAS addresses using the HBA utility, then use the HBA BIOS to make the appropriate configuration settings.

About this task

Guidelines for HBA utilities:

- Most HBA vendors offer an HBA utility. Depending on your host operating system and CPU, use either the LSI-sas2flash(6G) or sas3flash(12G) utility.
- Host I/O ports might automatically register if the host context agent is installed.

Procedure

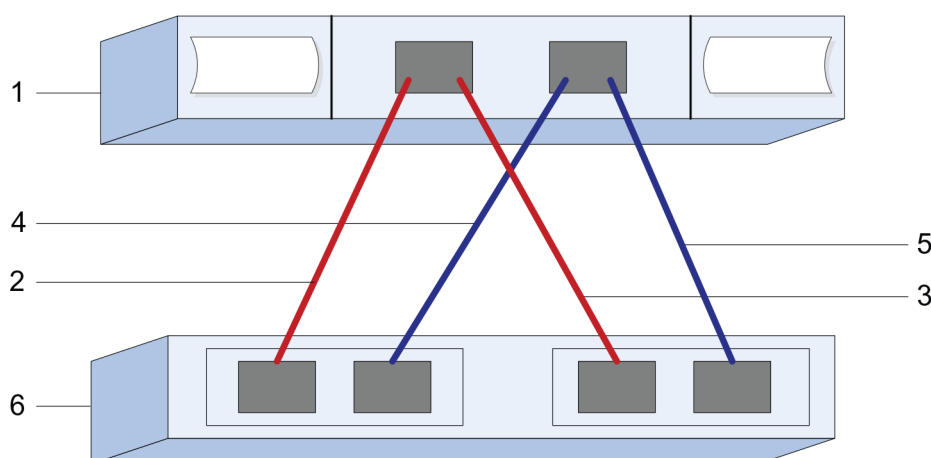
1. Download the LSI-sas2flash(6G) or sas3flash(12G) utility from your HBA vendor's web site.
2. Install the utility.
3. Use the HBA BIOS to select the appropriate settings for your configuration.
See the Notes column of the for recommendations.

Recording SAS-specific information for Windows

Record your protocol-specific storage configuration information on the SAS worksheet. You need this information to perform provisioning tasks.

SAS worksheet - Windows

You can use this worksheet to record SAS storage configuration information. You need this information to perform provisioning tasks.



Host Identifiers

Callout No.	Host (initiator) port connections	SAS address
1	Host	<i>not applicable</i>
2	Host (initiator) port 1 connected to Controller A, port 1	
3	Host (initiator) port 1 connected to Controller B, port 1	
4	Host (initiator) port 2 connected to Controller A, port 1	
5	Host (initiator) port 2 connected to Controller B, port 1	

Target Identifiers

Recommended configurations consist of two target ports.

Mappings Host

Mappings Host Name	
Host OS Type	

Discover storage on the host

LUNs on your storage system appear as disks to the Windows host. When you add new LUNs, you must manually rescan the associated disks to discover them. The host does not automatically discover new LUNs.

Before you begin

You must be logged on as an administrator.

Procedure

1. To discover the storage, run the following command from a Windows command prompt.

```
# echo rescan | diskpart
```

2. To verify the addition of new storage, run the following command.

```
# echo list disk | diskpart
```

Configure storage on the host

A new LUN is offline and has no partition or file system when a Windows host first discovers it. You must bring the volume online and initialize it in Windows. Optionally, you can format the LUN with a file system.

Before you begin

The host must have discovered the LUN.

About this task

You can initialize the disk as a basic disk with a GPT or MBR partition table. Typically, you format the LUN with a file system such as New Technology File System (NTFS).

Procedure

1. From a Windows command prompt, enter the `diskpart` context.

```
> diskpart
```

2. View the list of available disks.

```
> list disk
```

3. Select the disk to bring online.

```
> select disk 1
```

4. Bring the disk online.

```
> online disk
```

5. Create a partition.

```
> create partition primary
```

Note: In Windows Server 2008 and later, you are prompted immediately after creating the partition to format the disk and give it a name. Select **Cancel** on the prompt to continue using these instructions for formatting and naming the partition.

6. Assign a drive letter.

```
> assign letter=f
```

7. Format the disk.

```
> format FS=NTFS LABEL="New Volume" QUICK
```

8. Exit the `diskpart` context.

```
> exit
```

Related tasks

[Discover storage on the host](#) on page 23

Verify storage access on the host

Before using the volume, you verify that the host can write data to the LUN and read it back.

Before you begin

You must have initialized the LUN and formatted it with a file system.

Procedure

1. Create and write to a file on the new LUN.

```
> echo test file > f:\test.txt
```

2. Read the file and verify data was written.

```
> type f:\test.txt
```

3. To verify that multipath is working, change the volume ownership.

- a) From the SANtricity System Manager GUI, go to **Storage > Volumes**, and then select **More > Change ownership**.
- b) On the **Change Volume Ownership** dialog box, use the **Preferred Owner** pull-down to select the other controller for one of the volumes in the list, and then confirm the operation.
- c) Verify that you can still access the files on the LUN.

```
> dir f:\
```

4. Find the target ID.

Note: The dsmUtil utility is case sensitive.

```
> C:\Program Files (x86)\DSMDrivers\mppdsm\dsmUtil.exe -a
```

5. View the paths to the LUN and verify that you have the expected number of paths. In the <target ID> portion of the command, use the target ID that you found in the previous step.

```
> C:\Program Files (x86)\DSMDrivers\mppdsm\dsmUtil.exe -g <target ID>
```

Related tasks

[Configure storage on the host](#) on page 24

Where to find additional information - Windows

Use the resources listed here if you need additional information. You can also use the online help for SANtricity System Manager System Manager.

- Online help describes how to use SANtricity System Manager to complete configuration and storage management tasks. It is available within the product and in the [Documentation Center](#).

Copyright

Copyright 2020 FUJITSU LIMITED. All rights reserved.

No part of this document covered by copyright may be reproduced in any form or by any means - graphic, electronic, or mechanical, including photocopying, recording, taping, or storage in an electronic retrieval system - without prior written permission of the copyright owner.

Software derived from copyrighted Fujitsu material is subject to the following license and disclaimer:

THIS SOFTWARE IS PROVIDED BY FUJITSU "AS IS" AND WITHOUT ANY EXPRESS OR IMPLIED WARRANTIES, INCLUDING, BUT NOT LIMITED TO, THE IMPLIED WARRANTIES OF MERCHANTABILITY AND FITNESS FOR A PARTICULAR PURPOSE, WHICH ARE HEREBY DISCLAIMED. IN NO EVENT SHALL FUJITSU BE LIABLE FOR ANY DIRECT, INDIRECT, INCIDENTAL, SPECIAL, EXEMPLARY, OR CONSEQUENTIAL DAMAGES (INCLUDING, BUT NOT LIMITED TO, PROCUREMENT OF SUBSTITUTE GOODS OR SERVICES; LOSS OF USE, DATA, OR PROFITS; OR BUSINESS INTERRUPTION) HOWEVER CAUSED AND ON ANY THEORY OF LIABILITY, WHETHER IN CONTRACT, STRICT LIABILITY, OR TORT (INCLUDING NEGLIGENCE OR OTHERWISE) ARISING IN ANY WAY OUT OF THE USE OF THIS SOFTWARE, EVEN IF ADVISED OF THE POSSIBILITY OF SUCH DAMAGE.

Fujitsu reserves the right to change any products described herein at any time, and without notice. Fujitsu assumes no responsibility or liability arising from the use of products described herein, except as expressly agreed to in writing by Fujitsu. The use or purchase of this product does not convey a license under any patent rights, trademark rights, or any other intellectual property rights of Fujitsu.

Trademark

FUJITSU, FUJITSU logo, and ETERNUS are trademarks of Fujitsu. All other trademarks are the property of their respective owners.

<https://www.fujitsu.com/global/products/computing/storage/eternus/trademarks.html>

How to send comments about documentation and receive update notifications

The latest version of this document and the latest information related to this device are available at the following site.

<https://www.fujitsu.com/global/support/products/computing/storage/manuals-list.html>

If necessary, refer to the manuals for your model.

FUJITSU Storage ETERNUS AB/HB Series
Express Configuration For Windows®

A3CA08733-A107-01

Date of issuance: April 2020

Issuance responsibility: FUJITSU LIMITED

- The content of this manual is subject to change without notice.
- This manual was prepared with the utmost attention to detail.

However, Fujitsu shall assume no responsibility for any operational problems as the result of errors, omissions, or the use of information in this manual.

- Fujitsu assumes no liability for damages to third party copyrights or other rights arising from the use of any information in this manual.
- The content of this manual may not be reproduced or distributed in part or in its entirety without prior permission from Fujitsu.