

Future-Ready Hybrid Cloud Infrastructure Fit for the “AI Everywhere” Era

Leveraging hybrid cloud infrastructures to support multipurpose AI workloads and strategies



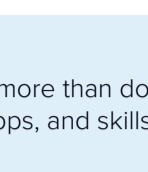
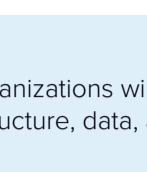
Archana Venkatraman
 Senior Research Director,
 Cloud Data Management,
 IDC Europe



Filippo Vanara
 Senior Research Analyst,
 European CloudOps,
 IDC

Hybrid Cloud Strategy Needs to Accommodate AI

AI and GenAI workloads are coming thick and fast. Businesses need a hybrid cloud that supports modern workload needs



One-third of tech leaders believe GenAI is disrupting their business

\$1.9M

2024



\$4.1M

2025



Businesses are investing in all components of hybrid cloud infrastructures to balance flexibility and agility with governance and control.



RECOMMENDATION: Adopt a workload-centric approach to hybrid cloud infrastructure.

Source: IDC's Future Enterprise Resilience Survey, June 2024

Regulatory Preparedness: Hybrid Cloud Infrastructure Must Address Evolving Compliance Needs

IDC Predicts

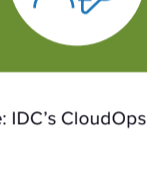
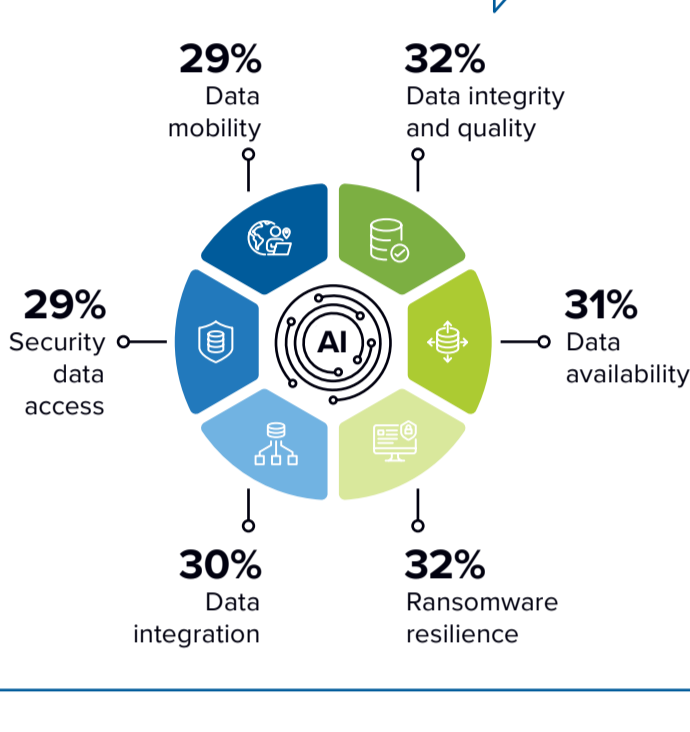
By 2027, the G2000 organizations will double their investments in trusted infrastructure to ensure legislative and sovereignty compliance and protection of regulated workloads.

Why? The clock is ticking to demonstrate compliance with:



- GDPR (ongoing)
- NIS2 (2024)
- DORA (2025)
- CSRD (2025)
- EU AI Act (2026)
- Cyber Resilience Act (2027)

Where are savvy organizations investing?



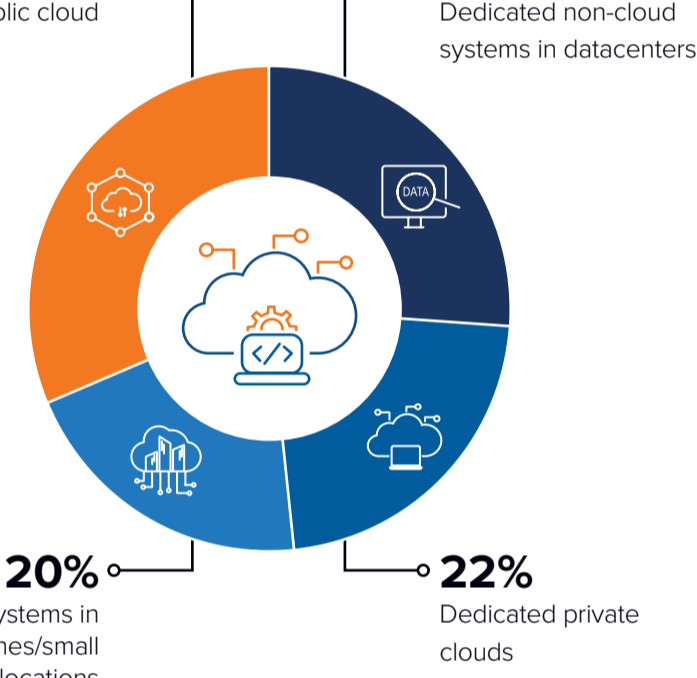
RECOMMENDATION: Consider business needs, compliance, costs, and data strategy when investing in infrastructure.

Source: IDC's CloudOps Survey, 2024

GenAI Workloads Are Hybrid Cloud Oriented



68% of European businesses expect to host **GenAI workloads in non-public cloud environments.**



Drivers for infrastructure choices:

- Security and compliance
- Data locality and integration needs
- Vendor support
- Openness and interoperability
- Cost control
- Existing skills



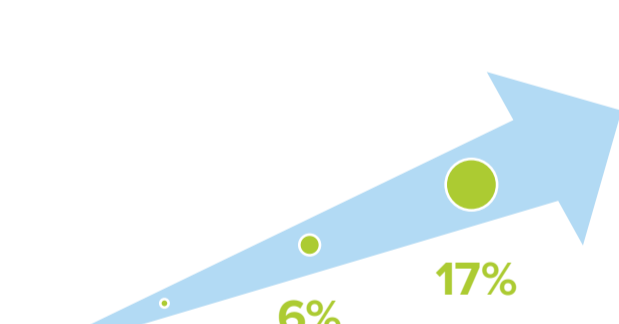
RECOMMENDATION: Execute a workload-centric approach with hybrid cloud modernization.

Source: IDC's FERS Survey, Wave 1, January 2024

Workload Portability Is a Reality: Private Cloud's Renaissance



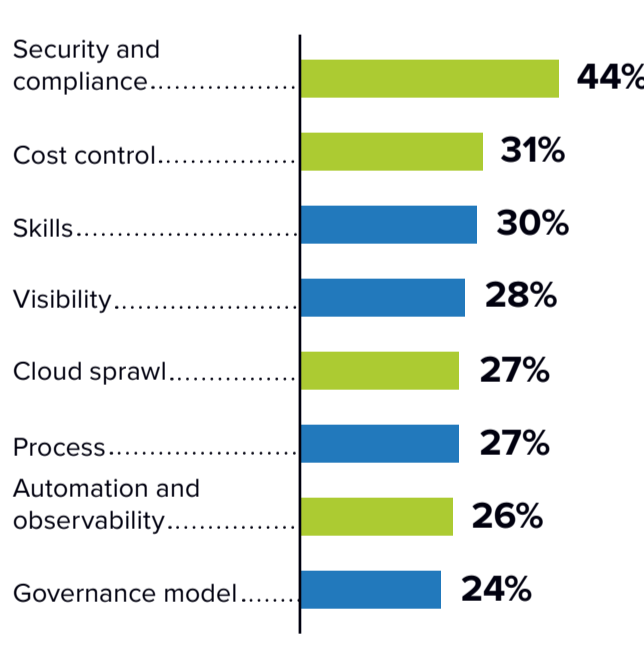
Investments in private infrastructure are aimed at bringing cloud-like experience on premises. 6 of every 10 IT buyers are prioritizing “as-a-service” consumption models.



Percentage of respondents planning to migrate workloads from public cloud back to on premises



After-Effect Concerns of Public Cloud-First Strategies



Legend: Tech challenges (Green), Business challenges (Blue)



RECOMMENDATION: Build in workload portability with containers and take workloads to data environments.

Source: IDC's EMEA Multicloud Surveys, August 2021, September 2022; and IDC's EMEA Cloud Survey, September 2024

Future-Ready Hybrid Cloud Characteristics

Does your hybrid cloud foundation tick all the boxes?

IDC predicts that:



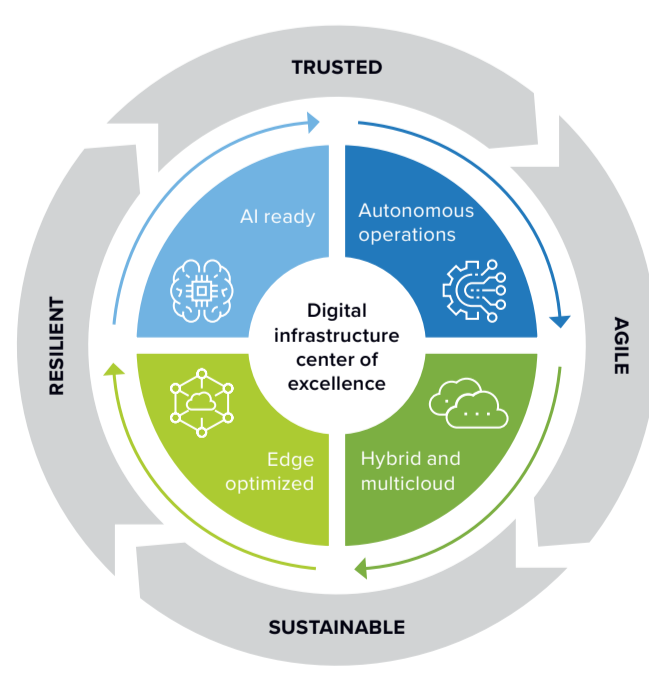
With GenAI as a catalyst, by 2027, 40% of enterprises will rely on interwoven IT architectures across cloud, core, and edge.



Emphasizes security and governance



Efficient and sustainable



Suitable for workloads of today and tomorrow

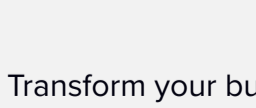


Integrated, modular, open, and flexible



RECOMMENDATION: Centers of excellence should focus on balancing agility, efficiency, and governance.

Message from the Sponsor



Transform your business with Fujitsu's AI-ready hybrid cloud solutions. Our tailored platforms offer flexibility, scalability, and governance to support diverse AI initiatives and future-proof your infrastructure.

Partner with us today to confidently navigate AI, containers, and hybrid cloud complexities. Contact us to help evolve your datacenter to support your digital journey.