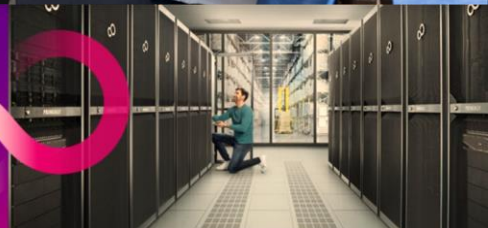


# FTA Online

## Enrollment Tips at a Glance



European Platform Business  
Fujitsu Training Academy Online



- **Mandatory** - All Partners must be registered within the Extranet Portal in order to access FTAOnline. If you have never registered before, please use the following link - [Fujitsu : Partner Registration](#)
- Your Account has been expired due to inactivity ? Please reactivate with the below link.  
<https://apps.ts.fujitsu.com/UserRegistration-Public/Account/ResendProlongationLink>
- Need to reset your Password? This is only possible in the Extranet Portal. [Change Password here](#)
- Multi-Factor Authentication procedure - Since November 2023 it is mandatory for every Fujitsu extranet user to set up a 2-way authentication. Steps in detail are described in PDF file below :  
<https://docs.ts.fujitsu.com/dl.aspx?id=e14243f3-d270-4d28-93ee-6a7dc5dd2176>
- For extranet account issues contact Helpdesk, Extranet [extranet@fujitsu.com](mailto:extranet@fujitsu.com)  
Please ensure to send detailed screenshots of the issue for smooth support experience.

# Tips for ILT Enrollment in FTA Online

- Post successful Extranet Registration, kindly follow the **below 3 steps** to access FTA Online courses.
- Due to security concerns, accessing course links directly will not be possible for Partners.
- **Step 1**: Login to Extranet Partner Portal - <https://extranet.ts.fujitsu.com>
- Username : PARTNER\User.name
- **Step 2**: Login link to FTA Online for Partners <https://www.fujitsu.com/fta-partner>
- **Step 3** : Click on the Course or Session Enrollment Link for – Name of the Course - [Insert Partner Course link here](#)
- **Step 4** : Already completed this training in the past and would like to redo the same?  
Archive your previous learning experience first by getting in touch with [training@fujitsu.com](mailto:training@fujitsu.com)

The instructor must mark the session as completed

 Pending Instructor's Approval

# Thank you

